

MLANA Polyclonal Antibody

catalog number: E-AB-19522

Note: Centrifuge before opening to ensure complete recovery of vial contents.

Description

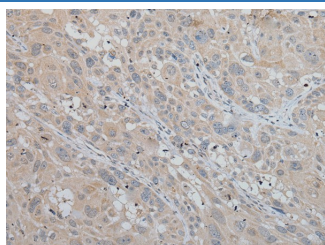
Reactivity	Human
Immunogen	Synthetic peptide of human MLANA
Host	Rabbit
Isotype	IgG
Purification	Antigen affinity purification
Conjugation	Unconjugated
buffer	Phosphate buffered solution, pH 7.4, containing 0.05% stabilizer and 50% glycerol.

Applications

Recommended Dilution

IHC	1:40-1:250
------------	------------

Data



Immunohistochemistry of paraffin-embedded Human esophagus cancer tissue using MLANA Polyclonal Antibody at dilution of 1:50($\times 200$)

Preparation & Storage

Storage	Store at -20°C Valid for 12 months. Avoid freeze / thaw cycles.
Shipping	The product is shipped with ice pack, upon receipt, store it immediately at the temperature recommended.

Background

Melan-A is a melanocyte differentiation antigen, recognized by autologous cytotoxic T lymphocytes. Melan-A is also called MART-1 (melanoma antigen recognized by T cells). The Melan-A/MART-1 gene encodes this protein, 20-22 kDa, associated with endoplasmic reticulum and melanosomes. The function of the protein is unknown. Melan-A, isolated as a melanoma-specific antigen, is a transmembrane protein, which is expressed in skin, retina and the majority of cultured melanocytes as well as in melanomas. Melan A is expressed in more than 85% of melanomas.

For Research Use Only