

SLC25A13 Polyclonal Antibody

Catalog Number: E-AB-11581

Note: Centrifuge before opening to ensure complete recovery of vial contents.

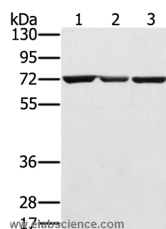
Description

Reactivity	Human, Mouse
Immunogen	Recombinant protein of human SLC25A13
Host	Rabbit
Isotype	IgG
Purification	Affinity purification
Conjugation	Unconjugated
Formulation	PBS with 0.05% sodium azide and 50% glycerol, PH7.4

Applications Recommended Dilution

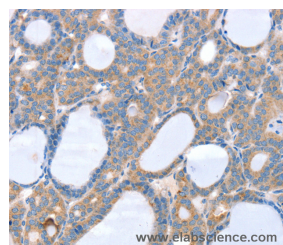
WB	1:500-1:2000
IHC	1:25-1:100

Data

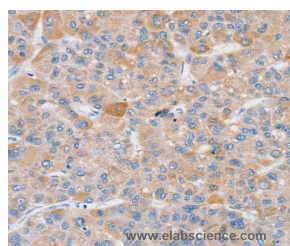


Western Blot analysis of Hepg2, A172 and Raji cell using SLC25A13 Polyclonal Antibody at dilution of 1:450

Calculated Mw: 74kDa



Immunohistochemistry of paraffin-embedded Human thyroid cancer using SLC25A13 Polyclonal Antibody at dilution of 1:35



Immunohistochemistry of paraffin-embedded Human liver cancer using SLC25A13 Polyclonal Antibody at dilution of 1:35

Preparation & Storage

Storage Store at -20°C. Avoid freeze / thaw cycles.

Background

This gene is a member of the mitochondrial carrier family. The encoded protein contains four EF-hand Ca²⁺ binding motifs in the N-terminal domain, and localizes to mitochondria. The protein catalyzes the exchange of aspartate for glutamate and a proton across the inner mitochondrial membrane, and is stimulated by calcium on the external side of the

For Research Use Only

A Reliable Research Partner in Life Science and Medicine

Toll-free: 1-888-852-8623

Web: www.elabscience.com

Tel: 1-832-243-6086

Email: techsupport@elabscience.com

Fax: 1-832-243-6017

SLC25A13 Polyclonal Antibody

Catalog Number: E-AB-11581



inner mitochondrial membrane. Mutations in this gene result in citrullinemia, type II. Multiple transcript variants encoding different isoforms have been found for this gene.

For Research Use Only

A Reliable Research Partner in Life Science and Medicine

Toll-free: 1-888-852-8623

Tel: 1-832-243-6086

Fax: 1-832-243-6017

Web: www.elabscience.com

Email: techsupport@elabscience.com