

PDHA2 Polyclonal Antibody

Catalog Number: E-AB-65645



Note: Centrifuge before opening to ensure complete recovery of vial contents.

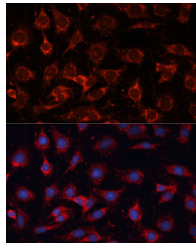
Description

Reactivity	Human, Mouse, Rat
Immunogen	Recombinant fusion protein of human PDHA2 (NP_005381.1).
Host	Rabbit
Isotype	IgG
Purification	Affinity purification
Conjugation	Unconjugated
Formulation	PBS with 0.02% sodium azide, 50% glycerol, pH7.3.

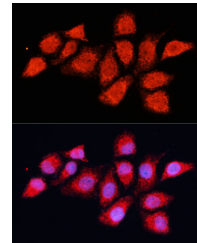
Applications Recommended Dilution

IF	1:50-1:200
-----------	------------

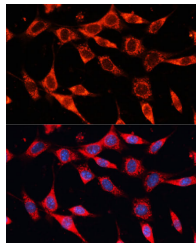
Data



Immunofluorescence analysis of C6 cells using PDHA2 Polyclonal Antibody at dilution of 1:100 (40x lens). Blue: DAPI for nuclear staining.



Immunofluorescence analysis of HeLa cells using PDHA2 Polyclonal Antibody at dilution of 1:100 (40x lens). Blue: DAPI for nuclear staining.



Immunofluorescence analysis of NIH-3T3 cells using PDHA2 Polyclonal Antibody at dilution of 1:100 (40x lens). Blue: DAPI for nuclear staining.

Preparation & Storage

Storage Store at -20°C. Avoid freeze / thaw cycles.

Background

PDHA2 (Pyruvate Dehydrogenase E1 Subunit Alpha 2) is a Protein Coding gene. Diseases associated with PDHA2 include Spermatogenic Failure 1. Among its related pathways are Glucose metabolism and Citrate cycle (TCA cycle). Gene Ontology (GO) annotations related to this gene include oxidoreductase activity, acting on the aldehyde or oxo group of donors, disulfide as acceptor and pyruvate dehydrogenase (acetyl-transferring) activity. An important paralog of this gene is PDHA1.

For Research Use Only

A Reliable Research Partner in Life Science and Medicine

Toll-free: 1-888-852-8623

Web: www.elabscience.com

Tel: 1-832-243-6086

Email: techsupport@elabscience.com

Fax: 1-832-243-6017