

# Recombinant Human Relaxin-1/RLN1 Protein (His Tag)



Catalog Number:PKSH031058

**Note:** Centrifuge before opening to ensure complete recovery of vial contents.

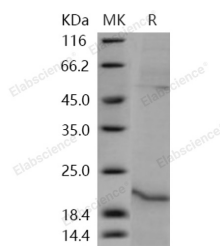
## Description

<b>Synonyms</b>	bA12D24.3.1;bA12D24.3.2;H1;H1RLX;RLN1;RLXH1
<b>Species</b>	Human
<b>Expression Host</b>	HEK293 Cells
<b>Sequence</b>	Met 1-Cys 185
<b>Accession</b>	NP_008842.1
<b>Calculated Molecular Weight</b>	20.0 kDa
<b>Observed molecular weight</b>	20 kDa
<b>Tag</b>	C-His

## Properties

<b>Purity</b>	> 82 % as determined by reducing SDS-PAGE.
<b>Endotoxin</b>	< 1.0 EU per µg of the protein as determined by the LAL method.
<b>Storage</b>	Generally, lyophilized proteins are stable for up to 12 months when stored at -20 to -80°C. Reconstituted protein solution can be stored at 4-8°C for 2-7 days. Aliquots of reconstituted samples are stable at < -20°C for 3 months.
<b>Shipping</b>	This product is provided as lyophilized powder which is shipped with ice packs.
<b>Formulation</b>	Lyophilized from sterile PBS, pH 7.4 Normally 5 % - 8 % trehalose, mannitol and 0.01% Tween80 are added as protectants before lyophilization. Please refer to the specific buffer information in the printed manual.
<b>Reconstitution</b>	Please refer to the printed manual for detailed information.

## Data



> 82 % as determined by reducing SDS-PAGE.

## Background

Relaxin-1, also known as Prorelaxin H1 and RLN1, is a secreted protein which belongs to the insulin family. It is a peptide hormone that was first described in 1926 by Frederick Hisaw. Since its discovery as a reproductive hormone 80 years ago, relaxin has been implicated in a number of pregnancy-related functions involving extracellular matrix (ECM) turnover and collagen degradation. It is now becoming evident that relaxin's ability to reduce matrix synthesis and increase ECM degradation has important implications in several nonreproductive organs, including the heart, lung, kidney, liver and skin. The relaxin-like peptide family belongs in the insulin superfamily and consists of 7 peptides of high structural but low sequence similarity; relaxin-1 (RNL1), relaxin-2 (RNL2) and relaxin-3 (RNL3), and the insulin-like (INSL) peptides, INSL3, INSL4, INSL5 and INSL6. The functions of relaxin-3, INSL4, INSL5, INSL6 remain uncharacterised. Relaxin-1

## For Research Use Only

A Reliable Research Partner in Life Science and Medicine

Toll-free: 1-888-852-8623

Web: [www.elabscience.com](http://www.elabscience.com)

Tel: 1-832-243-6086

Email: [techsupport@elabscience.com](mailto:techsupport@elabscience.com)

Fax: 1-832-243-6017

# Recombinant Human Relaxin-1/RLN1 Protein (His Tag)



Catalog Number:PKSH031058

---

/ RLN1 is an ovarian hormone that acts with estrogen to produce dilatation of the birth canal in many mammals. Relaxin-1 / RLN1 may be involved in remodeling of connective tissues during pregnancy, promoting growth of pubic ligaments and ripening of the cervix. Relaxin and estrogen appear to play protective roles against airway fibrosis, airway SM thickening, and cardiac hypertrophy. Relaxin may also provide a means to regulate excessive collagen deposition during kidney development and in diseased states characterized by renal fibrosis.

---

## For Research Use Only

A Reliable Research Partner in Life Science and Medicine

Toll-free: 1-888-852-8623

Tel: 1-832-243-6086

Fax: 1-832-243-6017

Web: [www.elabscience.com](http://www.elabscience.com)

Email: [techsupport@elabscience.com](mailto:techsupport@elabscience.com)