

# Recombinant Human CCL18 Protein (His Tag)

Catalog Number:PKSH032189



**Note:** Centrifuge before opening to ensure complete recovery of vial contents.

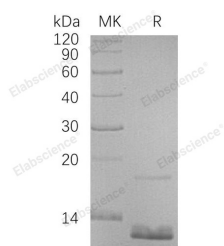
## Description

<b>Synonyms</b>	C-C Motif Chemokine 18;Alternative Macrophage Activation-Associated CC Chemokine 1;AMAC-1;CC Chemokine PARC;Dendritic Cell Chemokine 1;DC-CK1;Macrophage Inflammatory Protein 4;MIP-4;Pulmonary and Activation-Regulated Chemokine;Small-Inducible Cytokine A18;CCL18;AMAC1;DCCK1;MIP4;PARC;SCYA18
<b>Species</b>	Human
<b>Expression Host</b>	E.coli
<b>Sequence</b>	Ala21-Ala89
<b>Accession</b>	P55774
<b>Calculated Molecular Weight</b>	10.1 kDa
<b>Observed molecular weight</b>	13 kDa
<b>Tag</b>	N-His

## Properties

<b>Purity</b>	> 95 % as determined by reducing SDS-PAGE.
<b>Endotoxin</b>	< 1.0 EU per µg of the protein as determined by the LAL method.
<b>Storage</b>	Generally, lyophilized proteins are stable for up to 12 months when stored at -20 to -80°C. Reconstituted protein solution can be stored at 4-8°C for 2-7 days. Aliquots of reconstituted samples are stable at < -20°C for 3 months.
<b>Shipping</b>	This product is provided as lyophilized powder which is shipped with ice packs.
<b>Formulation</b>	Lyophilized from a 0.2 µm filtered solution of 20mM Citrate, 6% Trehalose, 4% Mannitol, 0.05% Tween 80, pH 4.0. Normally 5 % - 8 % trehalose, mannitol and 0.01% Tween80 are added as protectants before lyophilization. Please refer to the specific b
<b>Reconstitution</b>	Please refer to the printed manual for detailed information.

## Data



> 95 % as determined by reducing SDS-PAGE.

## Background

C-C Motif Chemokine 18 (CCL18) is secreted protein that belongs to the intercrine beta (chemokine CC) family. CCL18 is expressed at high levels in the lung, lymph nodes, placenta, bone marrow, and dendritic cells. CCL18 is a chemotactic factor that attracts lymphocytes but not monocytes or granulocytes. CCL18 may be involved in B-cell migration into B-

## For Research Use Only

A Reliable Research Partner in Life Science and Medicine

Toll-free: 1-888-852-8623

Web: [www.elabscience.com](http://www.elabscience.com)

Tel: 1-832-243-6086

Email: [techsupport@elabscience.com](mailto:techsupport@elabscience.com)

Fax: 1-832-243-6017

# Recombinant Human CCL18 Protein (His Tag)

Catalog Number:PKSH032189



cell follicles in lymph nodes. CCL18 attracts naive T-lymphocytes toward dendritic cells and activated macrophages in lymph nodes. It has chemotactic activity for naive T-cells, CD4+ and CD8+ T-cells and thus may play a role in both humoral and cell-mediated immunity responses.

---

## For Research Use Only

A Reliable Research Partner in Life Science and Medicine

Toll-free: 1-888-852-8623

Web: [www.elabscience.com](http://www.elabscience.com)

Tel: 1-832-243-6086

Email: [techsupport@elabscience.com](mailto:techsupport@elabscience.com)

Fax: 1-832-243-6017