

## Recombinant Human EGR1 Protein (His Tag)

**Catalog Number:** PKSH032369

**Note:** Centrifuge before opening to ensure complete recovery of vial contents.

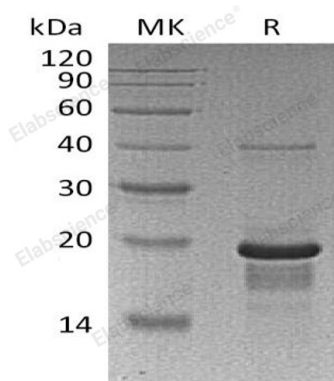
### Description

<b>Species</b>	Human
<b>Source</b>	E.coli-derived Human EGR1 protein Gln282-Ser433, with an N-terminal His
<b>Calculated MW</b>	19.9 kDa
<b>Observed MW</b>	19 kDa
<b>Accession</b>	P18146
<b>Bio-activity</b>	Not validated for activity

### Properties

<b>Purity</b>	> 95 % as determined by reducing SDS-PAGE.
<b>Endotoxin</b>	< 1.0 EU per µg of the protein as determined by the LAL method.
<b>Storage</b>	Generally, lyophilized proteins are stable for up to 12 months when stored at -20 to -80 °C. Reconstituted protein solution can be stored at 4-8°C for 2-7 days. Aliquots of reconstituted samples are stable at < -20°C for 3 months.
<b>Shipping</b>	This product is provided as lyophilized powder which is shipped with ice packs.
<b>Formulation</b>	Lyophilized from a 0.2 µm filtered solution of 20mM PB, 150mM NaCl, pH 7.4. Normally 5% - 8% trehalose, mannitol and 0.01% Tween 80 are added as protectants before lyophilization.
	Please refer to the specific buffer information in the printed manual.
<b>Reconstitution</b>	Please refer to the printed manual for detailed information.

### Data



> 95 % as determined by reducing SDS-PAGE.

### Background

EGR-1 belongs to the EGR family of C2H2-type zinc finger proteins. It is a nuclear protein and functions as a transcriptional regulator. EGR-1 recognizes and binds to the DNA sequence 5'-CGCCCCCGC-3'(EGR-site). The products of target genes it activates are required for differentiation and mitogenesis. Studies suggest this is a tumor suppressor gene. EGR-1 has a distinct pattern of expression in the brain, and its induction has been shown to be associated with neuronal activity. Several studies suggest it has a role in neuronal plasticity. EGR-1 has also been found to regulate the expression of synaptobrevin II (a protein important for synaptic exocytosis).

### For Research Use Only