

## Elab Fluor® 700 Anti-Human CD122/IL-2RB Antibody[TU27]

Catalog Number: E-AB-F1151M1

Note: Centrifuge before opening to ensure complete recovery of vial contents.

### Description

<b>Reactivity</b>	Human
<b>Host</b>	Mouse
<b>Isotype</b>	Mouse IgG1, κ
<b>Clone No.</b>	TU27
<b>Isotype Control</b>	Elab Fluor® 700 Mouse IgG1, κ Isotype Control[MOPC-21] [Product E-AB-F09792M1]
<b>Conjugation</b>	Elab Fluor® 700
<b>Conjugation Information</b>	Elab Fluor® 700 is designed to be excited by the Red laser (627-640 nm) and detected using an optical filter centered near 719 nm (e.g., a 725/40 nm bandpass filter).
<b>Storage Buffer</b>	Phosphate buffered solution, pH 7.2, containing 0.09% sodium azide and 1% BSA.

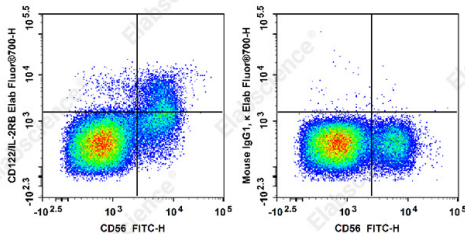
### Applications

### Recommended usage

#### FCM

Each lot of this antibody is quality control tested by flow cytometric analysis. **The amount of the reagent is suggested to be used 5 μL of antibody per test (million cells in 100 μL staining volume or per 100 μL of whole blood).** Please check your vial before the experiment. Since applications vary, the appropriate dilutions must be determined for individual use.

### Data



Staining of normal human peripheral blood cells with FITC

Anti-Human CD56 Antibody [5.1H11] and Elab Fluor® 700 Anti-Human CD122/IL-2RB Antibody[TU27](left) or Elab

Fluor® 700 Mouse IgG1, κ Isotype Control(right). Cells in the lymphocytes gate were used for analysis.

### Preparation & Storage

<b>Storage</b>	Keep as concentrated solution. This product can be stored at 2-8°C for 12 months. Please protected from prolonged exposure to light and do not freeze.
<b>Shipping</b>	Ice bag

### Antigen Information

<b>Alternate Names</b>	CD122;IL-2RB;IL-2Rβ;Interleukin-2 receptor subunit beta;p75
<b>Uniprot ID</b>	P14784
<b>Gene ID</b>	3560

### For Research Use Only

## Background

CD122 is a 70-75 kD type I transmembrane glycoprotein and member of the Ig superfamily. It is IL-2 receptor  $\beta$  chain also known as IL-2R $\beta$ , which is also shared by the IL-15 receptor. CD122 is constitutively expressed by NK cells and at lower levels by a subset of T cells. Its expression is upregulated upon activation. The IL-2R $\beta$  chain can combine with either the common  $\gamma$  subunit ( $\gamma$ c, CD132) alone or with the  $\gamma$ c subunit and the IL-2R $\alpha$  subunit (CD25) to generate intermediate or high affinity IL-2 receptor complexes, respectively. CD122 expression levels can be upregulated by activation.