

ICAM1 Polyclonal Antibody

catalog number: E-AB-93261

Note: Centrifuge before opening to ensure complete recovery of vial contents.

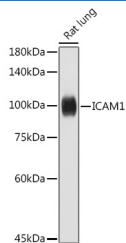
Description

Reactivity	Human;Mouse;Rat
Immunogen	Recombinant fusion protein of mouse ICAM1
Host	Rabbit
Isotype	IgG
Purification	Affinity purification
Buffer	Phosphate buffered solution, pH 7.4, containing 0.05% stabilizer and 50% glycerol.

Applications

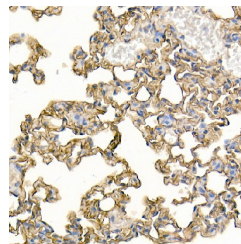
WB	1:500-1:2000
IHC	1:50-1:200

Data

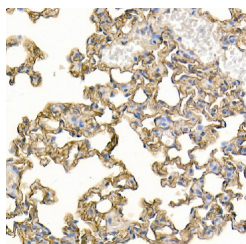


Western blot analysis of extracts of Rat lung using ICAM1 Polyclonal Antibody at 1:1000 dilution.

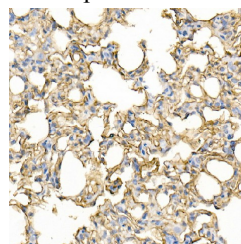
Observed-MW:85 kDa
Calculated-MW:58 kDa



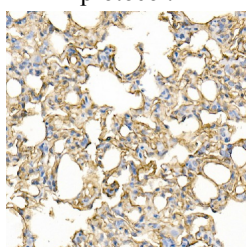
Immunohistochemistry of paraffin-embedded mouse lung using ICAM1 Polyclonal Antibody at dilution of 1:100 (40x lens). Perform high pressure antigen retrieval with 10 mM citrate buffer pH 6.0 before commencing with IHC staining protocol.



Immunohistochemistry of paraffin-embedded mouse lung using ICAM1 Polyclonal Antibody at dilution of 1:100 (40x lens). Perform high pressure antigen retrieval with 10 mM citrate buffer pH 6.0 before commencing with IHC staining protocol.



Immunohistochemistry of paraffin-embedded rat lung using ICAM1 Polyclonal Antibody at dilution of 1:100 (40x lens). Perform high pressure antigen retrieval with 10 mM citrate buffer pH 6.0 before commencing with IHC staining protocol.



For Research Use Only

Immunohistochemistry of paraffin-embedded rat lung using ICAM1 Polyclonal Antibody at dilution of 1:100 (40x lens). Perform high pressure antigen retrieval with 10 mM citrate buffer pH 6.0 before commencing with IHC staining protocol.

Preparation & Storage

Storage	Store at -20°C Valid for 12 months. Avoid freeze / thaw cycles.
Shipping	The product is shipped with ice pack, upon receipt, store it immediately at the temperature recommended.

Background

This gene encodes an integral membrane protein that binds leukocyte adhesion protein LFA-1. It participates in the innate immune response.

For Research Use Only