

Recombinant Human IL-23 Receptor/IL-23R Protein (Fc Tag)

Catalog Number: PKSH032579



Note: Centrifuge before opening to ensure complete recovery of vial contents.

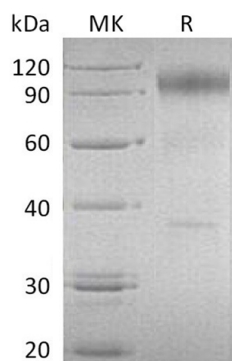
Description

Species	Human
Mol_Mass	65.0 kDa
Accession	Q5VWK5
Bio-activity	Immobilized Human IL-23R-Fc at 10µg/ml (100 µl/well) can bind Human IL-23-His. The ED50 of Human IL-23-His is 0.248 µg/ml.

Properties

Purity	> 90 % as determined by reducing SDS-PAGE.
Endotoxin	< 1.0 EU per µg of the protein as determined by the LAL method.
Storage	Generally, lyophilized proteins are stable for up to 12 months when stored at -20 to -80 °C. Reconstituted protein solution can be stored at 4-8°C for 2-7 days. Aliquots of reconstituted samples are stable at < -20°C for 3 months.
Shipping	This product is provided as lyophilized powder which is shipped with ice packs.
Formulation	Lyophilized from a 0.2 µm filtered solution of PBS, pH 7.4. Normally 5% - 8% trehalose, mannitol and 0.01% Tween 80 are added as protectants before lyophilization. Please refer to the specific buffer information in the printed manual.
Reconstitution	Please refer to the printed manual for detailed information.

Data



> 90 % as determined by reducing SDS-PAGE.

Background

Interleukin 23 receptor (IL23R) is a type I cytokine receptor for IL23. IL23 receptor complex is comprised of two subunits; the IL12Rβ1 subunit; which is shared with several cytokines; and a subunit that is unique to IL-23. IL23; after binding to IL23R; activates memory T cells and mediates pro-inflammatory activities in part by the production of IL17 through activation of TH17 lymphocytes. IL23R is expressed on T cells; NK cells; dendritic cells; and macrophages. In fact; polymorphisms of the IL23R gene were reported to be associated with susceptibility to inflammatory diseases and autoimmune diseases such as psoriasis; multiple sclerosis; Graves's ophthalmopathy and inflammatory bowel diseases. The IL23R is known to be critically involved in the carcinogenesis of different malignant tumor.

For Research Use Only

A Reliable Research Partner in Life Science and Medicine
Tel:400-999-2100

Email: techsupport@elabscience.cn

Web: www.elabscience.cn

Rev. V3.2