

## Myc-Tag Monoclonal Antibody

**catalog number: E-AB-48023**

**Note:** Centrifuge before opening to ensure complete recovery of vial contents.

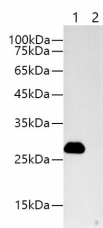
### Description

<b>Reactivity</b>	All
<b>Immunogen</b>	Synthetic peptide corresponding to Myc tag conjugated to keyhole limpet haemocyanin.
<b>Host</b>	Mouse
<b>Isotype</b>	IgG2a
<b>Clone</b>	3E9
<b>Purification</b>	Protein A/G Purification
<b>Buffer</b>	PBS, pH 7.2. Contains 0.05% Proclin300.

### Applications

Applications	Recommended Dilution
<b>WB</b>	1:2000-4000
<b>FCM</b>	0.2µg

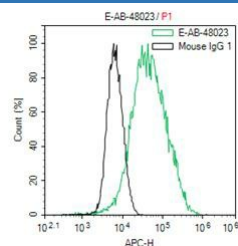
### Data



Western blotting with anti-MYC Mouse monoclonal antibody at dilution of 1:1000. Lane 1: MYC tag transfected HEK 293 cell lysates, lane 2: HEK 293 whole cell lysate

**Observed-MW:28 kDa**

**Calculated-MW:28 kDa**



1x10<sup>6</sup> CHO cells Transfected with a MYC plasmid were stained with 0.2ug Anti-MYC tag mAb(E-AB-48023) and AF647 conjugated Goat Anti-mouse IgG(H+L); Isotype Control stained with 0.2ug mouse IgG and AF647 conjugated Goat Anti-mouse IgG (H+L)

### Preparation & Storage

<b>Storage</b>	Store at -20°C Valid for 12 months. Avoid freeze / thaw cycles.
<b>Shipping</b>	The product is shipped with ice pack, upon receipt, store it immediately at the temperature recommended.

### Background

The MYC tag, derived from the c-MYC protein, is a popular epitope tag for detecting the expression of recombinant proteins in yeast, bacteria, insect, and mammalian cell systems. It can be used for affinity chromatography, then used to separate recombinant, overexpressed protein from wild type protein expressed by the host organism. It can also be used in the isolation of protein complexes with multiple subunits.

### For Research Use Only