

VPS35 Polyclonal Antibody

catalog number: E-AB-19592

Note: Centrifuge before opening to ensure complete recovery of vial contents.

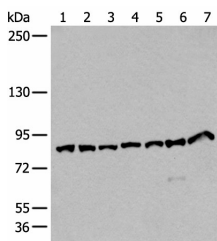
Description

Reactivity	Human;Mouse
Immunogen	Synthetic peptide of human VPS35
Host	Rabbit
Isotype	IgG
Purification	Antigen affinity purification
Buffer	Phosphate buffered solution, pH 7.4, containing 0.05% stabilizer and 50% glycerol.

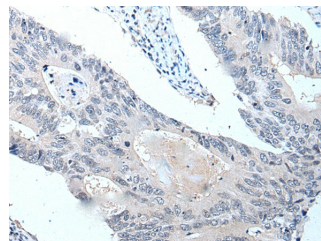
Applications

Applications	Recommended Dilution
WB	1:500-1:2000
IHC	1:20-1:100

Data



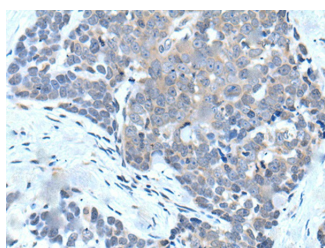
Western blot analysis of Hela HEPG2 Raji NIH/3T3 and A549 cell lysates Human cerebella tissue and Mouse brain tissue lysates using VPS35 Polyclonal Antibody at dilution of 1:250



Immunohistochemistry of paraffin-embedded Human colorectal cancer tissue using VPS35 Polyclonal Antibody at dilution of 1:25(×200)

Observed-MW:Refer to figures

Calculated-MW:92 kDa



Immunohistochemistry of paraffin-embedded Human thyroid cancer tissue using VPS35 Polyclonal Antibody at dilution of 1:25(×200)

Preparation & Storage

Storage	Store at -20°C Valid for 12 months. Avoid freeze / thaw cycles.
Shipping	The product is shipped with ice pack,upon receipt,store it immediately at the temperature recommended.

Background

For Research Use Only

This gene belongs to a group of vacuolar protein sorting (VPS) genes. The encoded protein is a component of a large multimeric complex, termed the retromer complex, involved in retrograde transport of proteins from endosomes to the trans-Golgi network. The close structural similarity between the yeast and human proteins that make up this complex suggests a similarity in function. Expression studies in yeast and mammalian cells indicate that this protein interacts directly with VPS35, which serves as the core of the retromer complex.

For Research Use Only

Toll-free: 1-888-852-8623
Web: www.elabscience.com

Tel: 1-832-243-6086
Email: techsupport@elabscience.com

Fax: 1-832-243-6017

Rev. V1.7