

Recombinant Human MMP12/MMP-12/HME Protein (catalytic domain)



Catalog Number:PKSH031722

Note: Centrifuge before opening to ensure complete recovery of vial contents.

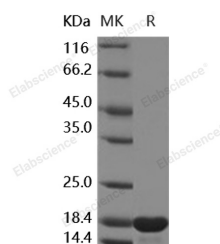
Description

Synonyms	HME;ME;MME;MMP-12
Species	Human
Expression Host	E.coli
Sequence	Gly106-Asn268
Accession	NP_002417.2
Calculated Molecular Weight	18.2 kDa
Observed molecular weight	18 kDa
Tag	None
Bioactivity	Measured by its ability to cleave the fluorogenic peptide substrate, Mca-PLGL-Dpa-AR-NH2 (AnaSpec, Catalog # 27076). The specific activity is > 800 pmoles/min/µg

Properties

Purity	> 90 % as determined by reducing SDS-PAGE.
Endotoxin	Please contact us for more information.
Storage	Generally, lyophilized proteins are stable for up to 12 months when stored at -20 to -80°C. Reconstituted protein solution can be stored at 4-8°C for 2-7 days. Aliquots of reconstituted samples are stable at < -20°C for 3 months.
Shipping	This product is provided as lyophilized powder which is shipped with ice packs.
Formulation	Lyophilized from sterile 10 mM Hepes, 2 mM CaCl ₂ , 250 mM NaCl, pH 7.0 Normally 5 % - 8 % trehalose, mannitol and 0.01 % Tween80 are added as protectants before lyophilization. Please refer to the specific buffer information in the printed manual.
Reconstitution	Please refer to the printed manual for detailed information.

Data



> 90 % as determined by reducing SDS-PAGE.

Background

Matrix metalloproteinases (MMPs) are a family of zinc-dependent endopeptidases that degrade components of the extracellular matrix (ECM) and play essential roles in various physiological processes such as morphogenesis, differentiation, angiogenesis and tissue remodeling, as well as pathological processes including inflammation, arthritis, cardiovascular diseases, pulmonary diseases and tumor invasion. Macrophage metalloelastase, also known as Matrix metalloproteinase-12, Macrophage elastase, MMP12, and MMP-12, is a secreted protein which belongs to the peptidase M10A family. MMP12 is a macrophage-secreted elastase that is highly induced in the liver and lung in response to S.

For Research Use Only

A Reliable Research Partner in Life Science and Medicine

Toll-free: 1-888-852-8623

Web: www.elabscience.com

Tel: 1-832-243-6086

Email: techsupport@elabscience.com

Fax: 1-832-243-6017

Recombinant Human MMP12/MMP-12/HME Protein (catalytic domain)



Catalog Number:PKSH031722

mansoni eggs and contains four hemopexin-like domains. MMP12 is a proteolytic enzyme responsible for cleavage of plasminogen to angiotensin, which has an angiostatic effect. It may be involved in tissue injury and remodeling and has significant elastolytic activity. It may be related to prognosis in breast cancer patients. MMP12 promotes fibrosis by limiting the expression of specific ECM-degrading MMPs. Like MMP12, MMP13 expression is highly dependent on IL-13 and type II-IL-4 receptor signaling. MMP12 is a potent proinflammatory and oncogenic molecule. MMP12 up-regulation plays a critical role in emphysema to lung cancer transition that is facilitated by inflammation.

For Research Use Only

A Reliable Research Partner in Life Science and Medicine

Toll-free: 1-888-852-8623

Web: www.elabscience.com

Tel: 1-832-243-6086

Email: techsupport@elabscience.com

Fax: 1-832-243-6017