

## GPLOW Polyclonal Antibody

catalog number: **E-AB-19058**

**Note:** Centrifuge before opening to ensure complete recovery of vial contents.

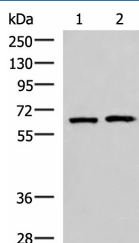
### Description

|                     |  |
|---------------------|--|
| <b>Reactivity</b>   | Human  |
| <b>Immunogen</b>    | Fusion protein of human GPLOW  |
| <b>Host</b>         | Rabbit   |
| <b>Isotype</b>      | IgG  |
| <b>Purification</b> | Antigen affinity purification  |
| <b>Buffer</b>       | Phosphate buffered solution, pH 7.4, containing 0.05% stabilizer and 50% glycerol. |

### Applications Recommended Dilution

|            |               |
|------------|---------------|
| <b>WB</b>  | 1:1000-1:5000 |
| <b>IHC</b> | 1:100-1:500   |

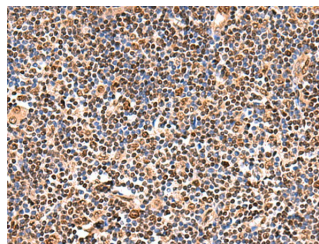
### Data



Western blot analysis of 293T and Jurkat cell lysates using GPLOW Polyclonal Antibody at dilution of 1:2000

**Observed-MW: Refer to figures**

**Calculated-MW: 53 kDa**



Immunohistochemistry of paraffin-embedded Human tonsil tissue using GPLOW Polyclonal Antibody at dilution of 1:140(×200)

### Preparation & Storage

|                 |  |
|-----------------|--|
| <b>Storage</b>  | Store at -20°C Valid for 12 months. Avoid freeze / thaw cycles.  |
| <b>Shipping</b> | The product is shipped with ice pack, upon receipt, store it immediately at the temperature recommended. |

### Background

This gene encodes a putative RNA-binding protein containing G-patch and KOW (Kyprides, Ouzounis, Woese) domains. The encoded protein interacts directly with protein kinase A and protein kinase X and is also found associated with the spliceosome.

### For Research Use Only