

# Recombinant Human Semenogelin-1/SEMG1 Protein (His Tag)



Catalog Number: PKSH033025

**Note:** Centrifuge before opening to ensure complete recovery of vial contents.

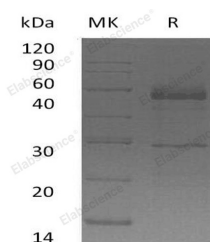
## Description

<b>Synonyms</b>	Semenogelin-1; Semenogelin I; SGI; SEMG1; SEMG; Alpha-Inhibin-92; Alpha-Inhibin-31; Seminal Basic Protein
<b>Species</b>	Human
<b>Expression Host</b>	HEK293 Cells
<b>Sequence</b>	Gln24-Thr402
<b>Accession</b>	AAH07096.1
<b>Calculated Molecular Weight</b>	43.8 kDa
<b>Observed molecular weight</b>	25-55 kDa
<b>Tag</b>	C-His

## Properties

<b>Purity</b>	> 95 % as determined by reducing SDS-PAGE.
<b>Endotoxin</b>	< 1.0 EU per µg of the protein as determined by the LAL method.
<b>Storage</b>	Generally, lyophilized proteins are stable for up to 12 months when stored at -20 to -80°C. Reconstituted protein solution can be stored at 4-8°C for 2-7 days. Aliquots of reconstituted samples are stable at < -20°C for 3 months.
<b>Shipping</b>	This product is provided as lyophilized powder which is shipped with ice packs.
<b>Formulation</b>	Lyophilized from a 0.2 µm filtered solution of 20mM Hac-NaAc, 150mM NaCl, pH 4.5. Normally 5 % - 8 % trehalose, mannitol and 0.01% Tween80 are added as protectants before lyophilization. Please refer to the specific buffer information in the print
<b>Reconstitution</b>	Please refer to the printed manual for detailed information.

## Data



> 95 % as determined by reducing SDS-PAGE.

## Background

Semenogelin-1 (SEMG1) is the predominant protein in semen; it is a secretory protein involved in the formation of a gel matrix entrapping the accessory gland secretions and ejaculated spermatozoa. The prostate-specific antigen (PSA) protease processes SEMG1 into smaller peptides, each possibly having a separate function. In the proteolysis process, Alpha-inhibin-92 and alpha-inhibin-31 are produced; they inhibit the secretion of pituitary follicle-stimulating hormone. At the same time, it breaks down the gel matrix, allowing the spermatozoa to move more freely.

## For Research Use Only

A Reliable Research Partner in Life Science and Medicine

Toll-free: 1-888-852-8623

Web: [www.elabscience.com](http://www.elabscience.com)

Tel: 1-832-243-6086

Email: [techsupport@elabscience.com](mailto:techsupport@elabscience.com)

Fax: 1-832-243-6017