

## Recombinant Human PSG2 Protein (His Tag)

**Catalog Number:** PKSH032924

**Note:** Centrifuge before opening to ensure complete recovery of vial contents.

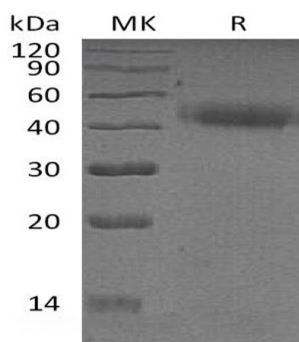
### Description

<b>Species</b>	Human
<b>Source</b>	HEK293 Cells-derived Human PSG2 protein Gln35-Thr335, with an C-terminal His
<b>Mol_Mass</b>	34.5 kDa
<b>Accession</b>	P11465
<b>Bio-activity</b>	Not validated for activity

### Properties

<b>Purity</b>	> 95 % as determined by reducing SDS-PAGE.
<b>Endotoxin</b>	< 1.0 EU per µg of the protein as determined by the LAL method.
<b>Storage</b>	Store at < -20°C, stable for 6 months. Please minimize freeze-thaw cycles.
<b>Shipping</b>	This product is provided as liquid. It is shipped at frozen temperature with blue ice/gel packs. Upon receipt, store it immediately at < - 20°C.
<b>Formulation</b>	Supplied as a 0.2 µm filtered solution of 20mM PB, 150mM NaCl, pH 7.4.
<b>Reconstitution</b>	Not Applicable

### Data



> 95 % as determined by reducing SDS-PAGE.

### Background

PSG2 is a secreted protein that in humans is encoded by the PSG2 gene. It is a member of the human pregnancy-specific glycoproteins (PSGs) family. These proteins are synthesized in large amounts by placental trophoblasts and released into the maternal circulation during pregnancy. PSG2 consist of a single N domain, with structural similarity to the immunoglobulin variable domains, followed by a variable number of immunoglobulin constant-like A and/or B domains. It has an arg-gly-asp (RGD) motif, which has been shown to function as an adhesion recognition signal for several integrins, in the N-terminal domain.

### For Research Use Only

Toll-free: 1-888-852-8623  
Web: [www.elabscience.com](http://www.elabscience.com)

Tel: 1-832-243-6086  
Email: [techsupport@elabscience.com](mailto:techsupport@elabscience.com)

Fax: 1-832-243-6017