

## Recombinant Human N6AMT1/HEMK2 Protein (His Tag)

**Catalog Number:** PKSH030850

**Note:** Centrifuge before opening to ensure complete recovery of vial contents.

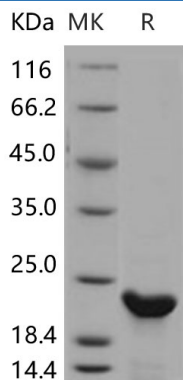
### Description

<b>Species</b>	Human
<b>Source</b>	E.coli-derived Human N6AMT1/HEMK2 protein Met 1-Ser 186, with an C-terminal His
<b>Calculated MW</b>	21.2 kDa
<b>Observed MW</b>	23 kDa
<b>Accession</b>	AAH11554.1
<b>Bio-activity</b>	Not validated for activity

### Properties

<b>Purity</b>	> 90 % as determined by reducing SDS-PAGE.
<b>Endotoxin</b>	Please contact us for more information.
<b>Storage</b>	Generally, lyophilized proteins are stable for up to 12 months when stored at -20 to -80 °C. Reconstituted protein solution can be stored at 4-8°C for 2-7 days. Aliquots of reconstituted samples are stable at < -20°C for 3 months.
<b>Shipping</b>	This product is provided as lyophilized powder which is shipped with ice packs.
<b>Formulation</b>	Lyophilized from sterile 20mM Tris, pH 8.0 Normally 5% - 8% trehalose, mannitol and 0.01% Tween 80 are added as protectants before lyophilization. Please refer to the specific buffer information in the printed manual.
<b>Reconstitution</b>	Please refer to the printed manual for detailed information.

### Data



> 90 % as determined by reducing SDS-PAGE.

### Background

### For Research Use Only

Toll-free: 1-888-852-8623  
Web: [www.elabscience.com](http://www.elabscience.com)

Tel: 1-832-243-6086  
Email: [techsupport@elabscience.com](mailto:techsupport@elabscience.com)

Fax: 1-832-243-6017

Pyruvate dehydrogenase kinase, isozyme 1, also known as [Pyruvate dehydrogenase [lipoamide]] kinase isozyme 1, mitochondrial and PDK1, is a member of the PDK / BCKDK protein kinase family. PDK-1 is expressed predominantly in the heart. It contains one histidine kinase domain. Pyruvate dehydrogenase kinase (PDK) isoforms are molecular switches that downregulate the pyruvate dehydrogenase complex (PDC) by reversible phosphorylation in mitochondria. An inhibitory effect of lipoic acid on PDKs would result in less phosphorylation of E1 and hence increased PDC activity. At least two isoenzymic forms of pyruvate dehydrogenase kinase (PDK-1 and PDK-2) may be involved in the regulation of enzymatic activity of mammalian pyruvate dehydrogenase complex by phosphorylation. PDK-3 appears to have the highest specific activity among the three isoenzymes. PDK-1 inhibits the mitochondrial pyruvate dehydrogenase complex by phosphorylation of the E1 alpha subunit, thus contributing to the regulation of glucose metabolism.