

MYEF2 Polyclonal Antibody

catalog number: E-AB-19171

Note: Centrifuge before opening to ensure complete recovery of vial contents.

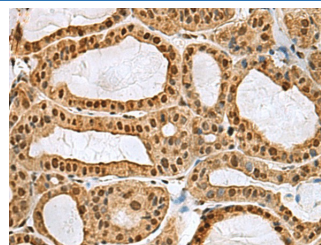
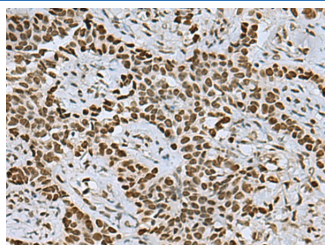
Description

| | |
|---------------------|--|
| Reactivity | Human |
| Immunogen | Fusion protein of human MYEF2 |
| Host | Rabbit |
| Isotype | IgG |
| Purification | Antigen affinity purification |
| Buffer | Phosphate buffered solution, pH 7.4, containing 0.05% stabilizer and 50% glycerol. |

Applications Recommended Dilution

| | |
|------------|------------|
| IHC | 1:50-1:200 |
|------------|------------|

Data



Immunohistochemistry of paraffin-embedded Human ovarian cancer tissue using MYEF2 Polyclonal Antibody at dilution of 1:55(×200)

Immunohistochemistry of paraffin-embedded Human thyroid cancer tissue using MYEF2 Polyclonal Antibody at dilution of 1:55(×200)

Preparation & Storage

| | |
|-----------------|--|
| Storage | Store at -20°C Valid for 12 months. Avoid freeze / thaw cycles. |
| Shipping | The product is shipped with ice pack, upon receipt, store it immediately at the temperature recommended. |

Background

Transcriptional repressor of the myelin basic protein gene (MBP). Binds to the proximal MB1 element 5'-TTGTCC-3' of the MBP promoter. Its binding to MB1 and function are inhibited by PURA (By similarity).

For Research Use Only