

RITA1 Polyclonal Antibody

catalog number: E-AB-19212

Note: Centrifuge before opening to ensure complete recovery of vial contents.

Description

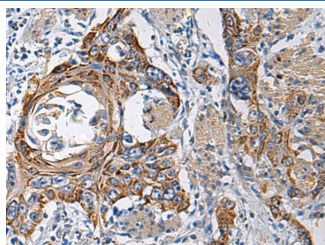
| | |
|---------------------|------------------------------------------------------------------------------------|
| Reactivity | Human |
| Immunogen | Fusion protein of human RITA 1 |
| Host | Rabbit |
| Isotype | IgG |
| Purification | Antigen affinity purification |
| Buffer | Phosphate buffered solution, pH 7.4, containing 0.05% stabilizer and 50% glycerol. |

Applications

Recommended Dilution

| | |
|------------|------------|
| IHC | 1:50-1:200 |
|------------|------------|

Data



Immunohistochemistry of paraffin-embedded Human esophagus cancer tissue using RITA1 Polyclonal Antibody at dilution of 1:60(×200)

Preparation & Storage

| | |
|-----------------|----------------------------------------------------------------------------------------------------------|
| Storage | Store at -20°C Valid for 12 months. Avoid freeze / thaw cycles. |
| Shipping | The product is shipped with ice pack, upon receipt, store it immediately at the temperature recommended. |

Background

Tubulin-binding protein that acts as a negative regulator of Notch signaling pathway. Shuttles between the cytoplasm and the nucleus and mediates the nuclear export of RBPJ/RBPSUH, thereby preventing the interaction between RBPJ/RBPSUH and NICD product of Notch proteins (Notch intracellular domain), leading to down-regulate Notch-mediated transcription. May play a role in neurogenesis.

For Research Use Only