

## RGMB Polyclonal Antibody

**catalog number: E-AB-90513**

**Note:** Centrifuge before opening to ensure complete recovery of vial contents.

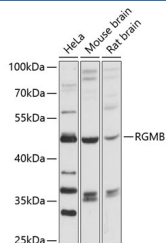
### Description

<b>Reactivity</b>	Human;Mouse;Rat
<b>Immunogen</b>	Recombinant fusion protein of human RGMB
<b>Host</b>	Rabbit
<b>Isotype</b>	IgG
<b>Purification</b>	Affinity purification
<b>Buffer</b>	Phosphate buffered solution, pH 7.4, containing 0.05% stabilizer and 50% glycerol.

### Applications Recommended Dilution

<b>WB</b>	1:500-1:2000
-----------	--------------

### Data



Western blot analysis of extracts of various cell lines using RGMB Polyclonal Antibody at 1:3000 dilution.

**Observed-MV:47 kDa**

**Calculated-MV:47 kDa**

### Preparation & Storage

<b>Storage</b>	Store at -20°C Valid for 12 months. Avoid freeze / thaw cycles.
<b>Shipping</b>	The product is shipped with ice pack, upon receipt, store it immediately at the temperature recommended.

### Background

RGMB is a glycosylphosphatidylinositol (GPI)-anchored member of the repulsive guidance molecule family (see RGMA, MIM 607362) and contributes to the patterning of the developing nervous system (Samad et al., 2005 [PubMed 1567103 1]).[supplied by OMIM, Apr 2009]

### For Research Use Only