

## GTF2E2 Polyclonal Antibody

catalog number: **E-AB-63899**

**Note:** Centrifuge before opening to ensure complete recovery of vial contents.

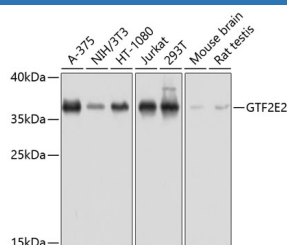
### Description

<b>Reactivity</b>	Human;Mouse;Rat
<b>Immunogen</b>	Recombinant fusion protein of human GTF2E2 (NP_002086.1).
<b>Host</b>	Rabbit
<b>Isotype</b>	IgG
<b>Purification</b>	Affinity purification
<b>Buffer</b>	Phosphate buffered solution, pH 7.4, containing 0.05% stabilizer and 50% glycerol.

### Applications

Applications	Recommended Dilution
<b>WB</b>	1:500-1:2000

### Data



Western blot analysis of extracts of various cell lines using GTF2E2 Polyclonal Antibody at dilution of 1:1000.

**Observed-MW:37 kDa**

**Calculated-MW:33 kDa**

### Preparation & Storage

<b>Storage</b>	Store at -20°C Valid for 12 months. Avoid freeze / thaw cycles.
<b>Shipping</b>	The product is shipped with ice pack, upon receipt, store it immediately at the temperature recommended.

### Background

The general transcription factor IIE (TFIIE) is part of the RNA polymerase II transcription initiation complex, recruiting TFIIF and being essential for promoter clearance by RNA polymerase II. TFIIE is a heterodimer (and sometimes heterotetramer) of alpha and beta subunits. The protein encoded by this gene represents the beta subunit of TFIIE.

### For Research Use Only