

# Recombinant Human Apolipoprotein A-I/ApoAI Protein

Catalog Number: PKSH032082



**Note:** Centrifuge before opening to ensure complete recovery of vial contents.

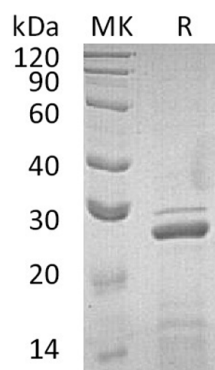
## Description

<b>Species</b>	Human
<b>Mol_Mass</b>	29.0 kDa
<b>Accession</b>	P02647
<b>Bio-activity</b>	Not validated for activity

## Properties

<b>Purity</b>	> 95 % as determined by reducing SDS-PAGE.
<b>Endotoxin</b>	< 1.0 EU per µg of the protein as determined by the LAL method.
<b>Storage</b>	Generally, lyophilized proteins are stable for up to 12 months when stored at -20 to -80 °C. Reconstituted protein solution can be stored at 4-8°C for 2-7 days. Aliquots of reconstituted samples are stable at < -20°C for 3 months.
<b>Shipping</b>	This product is provided as lyophilized powder which is shipped with ice packs.
<b>Formulation</b>	Lyophilized from a 0.2 µm filtered solution of 20mM PB, 150mM NaCl, pH 7.2. Normally 5% - 8% trehalose, mannitol and 0.01% Tween 80 are added as protectants before lyophilization. Please refer to the specific buffer information in the printed manual.
<b>Reconstitution</b>	Please refer to the printed manual for detailed information.

## Data



> 95 % as determined by reducing SDS-PAGE.

## Background

Apolipoprotein A1 (APOA1) is a secreted protein which belongs to the Apolipoprotein A1/A4/E family. APOA1 is the major protein component of high density lipoprotein (HDL) in plasma. APOA1 plays a critical role in various biological processes; such as Cholesterol metabolism; Lipid metabolism and transport; Steroid metabolism. APOA1 promotes cholesterol efflux from tissues to the liver and thus helps to clear cholesterol from arteries. Defects in this gene resulted in HDL deficiencies; including Tangier disease (TGD); systemic non-neuropathic amyloidosis; premature coronary artery disease; hepatosplenomegaly and progressive muscle wasting and weakness. In addition; ApoA-I is implicated in the anti-endotoxin function of HDL via interaction with lipopolysaccharide or endotoxin.

## For Research Use Only

A Reliable Research Partner in Life Science and Medicine  
Tel:400-999-2100

Email:[techsupport@elabscience.cn](mailto:techsupport@elabscience.cn)

Web:[www.elabscience.cn](http://www.elabscience.cn)

Rev. V3.5