

# PITPNB Polyclonal Antibody

catalog number: E-AB-52589

**Note:** Centrifuge before opening to ensure complete recovery of vial contents.

## Description

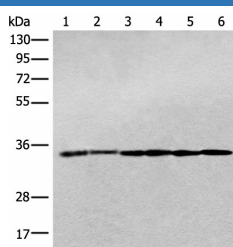
<b>Reactivity</b>	Human;Mouse;Rat
<b>Immunogen</b>	Fusion protein of human PITPNB
<b>Host</b>	Rabbit
<b>Isotype</b>	IgG
<b>Purification</b>	Antigen affinity purification
<b>Conjugation</b>	Unconjugated
<b>buffer</b>	Phosphate buffered solution, pH 7.4, containing 0.05% stabilizer and 50% glycerol.

## Applications

## Recommended Dilution

<b>WB</b>	1:500-1:2000
<b>IHC</b>	1:30-1:150

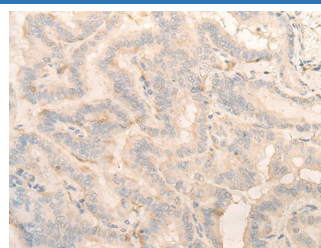
## Data



Western blot analysis of Jurkat cell Human breast cancer tissue Hela cell Human fetal brain tissue Human cerebrum tissue Rat brain tissue lysates using PITPNB Polyclonal Antibody at dilution of 1:400

**Observed-MV: Refer to figures**

**Calculated-MV: 32 kDa**



Immunohistochemistry of paraffin-embedded Human thyroid cancer tissue using PITPNB Polyclonal Antibody at dilution of 1:25(×200)

## Preparation & Storage

<b>Storage</b>	Store at -20°C Valid for 12 months. Avoid freeze / thaw cycles.
<b>Shipping</b>	The product is shipped with ice pack, upon receipt, store it immediately at the temperature recommended.

## Background

This gene encodes a cytoplasmic protein that catalyzes the transfer of phosphatidylinositol and phosphatidylcholine between membranes. This transfer activity is required for COPI complex-mediated retrograde transport from the Golgi apparatus to the endoplasmic reticulum. Alternative splicing of this gene results in multiple transcript variants.

## For Research Use Only