

## Recombinant Human PODXL Protein(GST Tag)

**Catalog Number:** PDEH100646

**Note:** Centrifuge before opening to ensure complete recovery of vial contents.

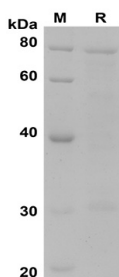
### Description

<b>Species</b>	Human
<b>Source</b>	E.coli-derived Human PODXL protein Ser23-Leu428, with an N-terminal GST
<b>Calculated MW</b>	70.6 kDa
<b>Observed MW</b>	78 kDa
<b>Accession</b>	O00592
<b>Bio-activity</b>	Not validated for activity

### Properties

<b>Purity</b>	> 80% as determined by reducing SDS-PAGE.
<b>Endotoxin</b>	< 10 EU/mg of the protein as determined by the LAL method
<b>Storage</b>	Generally, lyophilized proteins are stable for up to 12 months when stored at -20 to -80 °C. Reconstituted protein solution can be stored at 4-8°C for 2-7 days. Aliquots of reconstituted samples are stable at < -20°C for 3 months.
<b>Shipping</b>	This product is provided as lyophilized powder which is shipped with ice packs.
<b>Formulation</b>	Lyophilized from a 0.2 µm filtered solution in PBS with 5% Trehalose and 5% Mannitol.
<b>Reconstitution</b>	It is recommended that sterile water be added to the vial to prepare a stock solution of 0.5 mg/mL. Concentration is measured by UV-Vis.

### Data



SDS-PAGE analysis of Human PODXL proteins, 2µg/lane of  
Recombinant Human PODXL proteins was resolved with  
SDS-PAGE under reducing conditions, showing bands at 78  
KD

### Background

Podocalyxin-like protein (PODXL) is a member of CD34 family proteins. It is the protein that carries many post-translational epitopes responsible for various pluripotent surface markers including TRA-1-60, TRA-1-81, GCTM2, GP200, and mAb84. Podocalyxin-like 1 (PODXL) was reported to be closely associated with the development of various cancers. KLF4/PODXL signaling pathway assumes an irreplaceable role in tumorigenesis, invasion and metastasis of human GC and PODXL serves as an independent prognostic indicator for GC patients. PODXL may be a novel, non-invasive diagnostic biomarker for the detection of pancreatic cancer.

### For Research Use Only

Toll-free: 1-888-852-8623  
Web: [www.elabscience.com](http://www.elabscience.com)

Tel: 1-832-243-6086  
Email: [techsupport@elabscience.com](mailto:techsupport@elabscience.com)

Fax: 1-832-243-6017