

Recombinant 4E-BP1 Monoclonal Antibody

catalog number: **AN300817L**

Note: Centrifuge before opening to ensure complete recovery of vial contents.

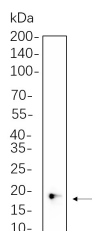
Description

| | |
|---------------------|---|
| Reactivity | Human;Mouse;Rat;Sheep |
| Immunogen | Recombinant Human 4E-BP1 protein |
| Host | Rabbit |
| Isotype | IgG, κ |
| Clone | B760 |
| Purification | Protein A |
| Buffer | PBS, 50% glycerol, 0.05% Proclin 300, 0.05% protein protectant. |

Applications Recommended Dilution

| | |
|--------------|----------------|
| IHC | 1:200-1:1000 |
| WB | 1:2000-1:10000 |
| IF | 1:200-1:1000 |
| ELISA | 1:5000-1:20000 |
| IP | 1:50-1:200 |

Data



Western Blot with Recombinant 4E-BP1 Monoclonal Antibody at dilution of 1:1000 dilution. Lane A: Jurkat cell lysate.

Observed-MW:17 kDa

Calculated-MW:13 kDa

Preparation & Storage

| | |
|-----------------|---|
| Storage | Store at -20°C Valid for 12 months. Avoid freeze / thaw cycles. |
| Shipping | Ice bag |

Background

This gene encodes one member of a family of translation repressor proteins. The protein directly interacts with eukaryotic translation initiation factor 4E (eIF4E), which is a limiting component of the multisubunit complex that recruits 40S ribosomal subunits to the 5' end of mRNAs. Interaction of this protein with eIF4E inhibits complex assembly and represses translation. This protein is phosphorylated in response to various signals including UV irradiation and insulin signaling, resulting in its dissociation from eIF4E and activation of mRNA translation.

For Research Use Only

Toll-free: 1-888-852-8623
Web: www.elabscience.com

Tel: 1-832-243-6086
Email: techsupport@elabscience.com

Fax: 1-832-243-6017

Rev. V1.3