

## IRF1 Polyclonal Antibody

catalog number: E-AB-62105

**Note:** Centrifuge before opening to ensure complete recovery of vial contents.

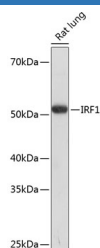
### Description

Reactivity	Human;Mouse;Rat
Immunogen	A synthetic peptide of human IRF1
Host	Rabbit
Isotype	IgG
Purification	Affinity purification
Buffer	Phosphate buffered solution, pH 7.4, containing 0.05% stabilizer and 50% glycerol.

### Applications

Applications	Recommended Dilution
WB	1:500-1:2000
IHC	1:50-1:100
IF	1:50-1:100

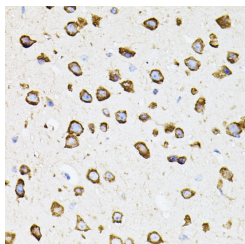
### Data



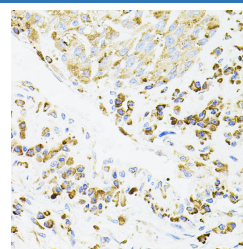
Western blot analysis of extracts of Rat lung using IRF1 Polyclonal Antibody at dilution of 1:1000.

**Observed-MW:50 kDa**

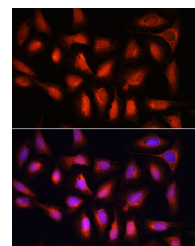
**Calculated-MW:36 kDa**



Immunohistochemistry of paraffin-embedded Mouse brain using IRF1 Polyclonal Antibody



Immunohistochemistry of paraffin-embedded Human lung cancer using IRF1 Polyclonal Antibody



Immunofluorescence analysis of U-2 OS cells using IRF1 Polyclonal Antibody at dilution of 1:100. Blue: DAPI for nuclear staining.

### Preparation & Storage

Storage	Store at -20°C Valid for 12 months. Avoid freeze / thaw cycles.
Shipping	The product is shipped with ice pack, upon receipt, store it immediately at the temperature recommended.

### Background

### For Research Use Only

IRF1 encodes interferon regulatory factor 1, a member of the interferon regulatory transcription factor (IRF) family. IRF1 serves as an activator of interferons alpha and beta transcription, and in mouse it has been shown to be required for double-stranded RNA induction of these genes. IRF1 also functions as a transcription activator of genes induced by interferons alpha, beta, and gamma. Further, IRF1 has been shown to play roles in regulating apoptosis and tumor-suppression.

## For Research Use Only

Toll-free: 1-888-852-8623  
Web: [www.elabscience.com](http://www.elabscience.com)

Tel: 1-832-243-6086  
Email: [techsupport@elabscience.com](mailto:techsupport@elabscience.com)

Fax: 1-832-243-6017

Rev. V1.7