

ANKLE2 Polyclonal Antibody

catalog number: **E-AB-91855**

Note: Centrifuge before opening to ensure complete recovery of vial contents.

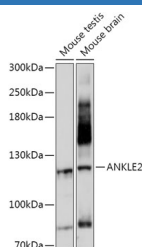
Description

Reactivity	Mouse;Rat
Immunogen	Recombinant fusion protein of human ANKLE2
Host	Rabbit
Isotype	IgG
Purification	Affinity purification
Buffer	Phosphate buffered solution, pH 7.4, containing 0.05% stabilizer and 50% glycerol.

Applications

WB	1:500-1:2000
-----------	--------------

Data



Western blot analysis of extracts of various cell lines using ANKLE2 Polyclonal Antibody at 1:1000 dilution.

Observed-MV:104 kDa

Preparation & Storage

Storage	Store at -20°C Valid for 12 months. Avoid freeze / thaw cycles.
Shipping	The product is shipped with ice pack,upon receipt,store it immediately at the temperature recommended.

Background

This gene encodes a member of the LEM family of inner nuclear membrane proteins. The encoded protein functions as a mitotic regulator through postmitotic formation of the nuclear envelope. Mutations in this gene cause morphology defects in the nuclear envelope and BAF hyperphosphorylation. [provided by RefSeq, Mar 2014]

For Research Use Only