

ATG4A Polyclonal Antibody

catalog number: E-AB-16183

Note: Centrifuge before opening to ensure complete recovery of vial contents.

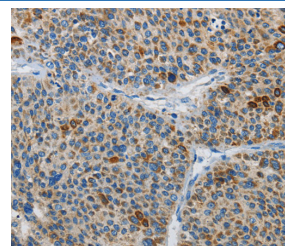
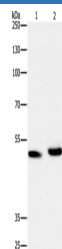
Description

Reactivity	Human
Immunogen	Synthetic peptide of human ATG4A
Host	Rabbit
Isotype	IgG
Purification	Affinity purification
Buffer	Phosphate buffered solution, pH 7.4, containing 0.05% stabilizer and 50% glycerol.

Applications

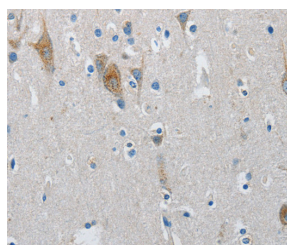
Applications	Recommended Dilution
WB	1:200-1:1000
IHC	1:25-1:100

Data



Western Blot analysis of 231 cell and Human liver cancer Immunohistochemistry of paraffin-embedded Human liver tissue using ATG4A Polyclonal Antibody at dilution of 1:300 cancer using ATG4A Polyclonal Antibody at dilution of 1:30

Calculated-MW:45 kDa



Immunohistochemistry of paraffin-embedded Human brain
using ATG4A Polyclonal Antibody at dilution of 1:30

Preparation & Storage

Storage	Store at -20°C Valid for 12 months. Avoid freeze / thaw cycles.
Shipping	The product is shipped with ice pack, upon receipt, store it immediately at the temperature recommended.

Background

For Research Use Only

Autophagy is the process by which endogenous proteins and damaged organelles are destroyed intracellularly. Autophagy is postulated to be essential for cell homeostasis and cell remodeling during differentiation, metamorphosis, non-apoptotic cell death, and aging. Reduced levels of autophagy have been described in some malignant tumors, and a role for autophagy in controlling the unregulated cell growth linked to cancer has been proposed. This gene encodes a member of the autophagin protein family. The encoded protein is also designated as a member of the C-54 family of cysteine proteases. Transcript variants that encode distinct isoforms have been identified.

For Research Use Only

Toll-free: 1-888-852-8623
Web: www.elabscience.com

Tel: 1-832-243-6086
Email: techsupport@elabscience.com

Fax: 1-832-243-6017

Rev. V1.7