

## Recombinant LYPD3 Monoclonal Antibody

catalog number: **AN300774L**

**Note:** Centrifuge before opening to ensure complete recovery of vial contents.

### Description

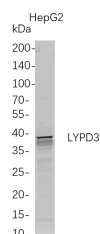
<b>Reactivity</b>	Human
<b>Immunogen</b>	Recombinant Human LYPD3 protein
<b>Host</b>	Rabbit
<b>Isotype</b>	IgG, $\kappa$
<b>Clone</b>	9D12
<b>Purification</b>	Protein A
<b>Buffer</b>	PBS, 50% glycerol, 0.05% Proclin 300, 0.05% protein protectant.

### Applications

### Recommended Dilution

<b>WB</b>	1:1000-5000
-----------	-------------

### Data



Western Blot with Recombinant LYPD3 Monoclonal Antibody at dilution of 1:1000 dilution. Lane A: HepG2 whole cell lysate.

**Observed-MW:38 kDa**

### Preparation & Storage

<b>Storage</b>	Store at -20°C Valid for 12 months. Avoid freeze / thaw cycles.
<b>Shipping</b>	Ice bag

### Background

Predicted to enable laminin binding activity. Involved in negative regulation of smooth muscle cell apoptotic process. Located in extracellular space.

### For Research Use Only