

Recombinant Human SLAMF7/CD319 Protein (His Tag)



Catalog Number:PKSH031026

Note: Centrifuge before opening to ensure complete recovery of vial contents.

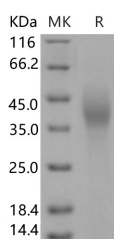
Description

Synonyms	SLAM Family Member 7;CD2 Subset 1;CD2-Like Receptor-Activating Cytotoxic Cells;CRACC;Membrane Protein FOAP-12;Novel Ly9;Protein 19A;CD319;SLAMF7;CS1;SLAM7
Species	Human
Expression Host	HEK293 Cells
Sequence	Met 1-Met 226
Accession	NP_067004.3
Calculated Molecular Weight	23.8 kDa
Tag	C-His
Bioactivity	Measured by its ability to bind biotinylated human SH2D1A-His in a functional ELISA.

Properties

Purity	> 93 % as determined by reducing SDS-PAGE.
Endotoxin	< 1.0 EU per µg of the protein as determined by the LAL method.
Storage	Generally, lyophilized proteins are stable for up to 12 months when stored at -20 to -80°C. Reconstituted protein solution can be stored at 4-8°C for 2-7 days. Aliquots of reconstituted samples are stable at < -20°C for 3 months.
Shipping	This product is provided as lyophilized powder which is shipped with ice packs.
Formulation	Lyophilized from sterile PBS, pH 7.4 Normally 5 % - 8 % trehalose, mannitol and 0.01 % Tween80 are added as protectants before lyophilization. Please refer to the specific buffer information in the printed manual.
Reconstitution	Please refer to the printed manual for detailed information.

Data



> 93 % as determined by reducing SDS-PAGE.

Background

SLAM family member 7 (SLAMF7), also known as CRACC, CD319, CD2-like receptor-activating cytotoxic cells, and CS1, is a single-pass type I membrane protein and a member of the CD2 family of cell surface receptors. SLAMF7 is expressed in NK cells, activated B-cells, NK-cell line but not in promyelocytic, B-cell lines, or T-cell lines. Although the cytoplasmic domain of CS1 contains immunoreceptor tyrosine-based switch motifs (ITSM), which enables to recruit signaling lymphocyte activation molecule (SLAM)-associated protein (SAP/SH2D1A), it activates NK cells in the absence

For Research Use Only

A Reliable Research Partner in Life Science and Medicine

Toll-free: 1-888-852-8623

Web: www.elabscience.com

Tel: 1-832-243-6086

Email: techsupport@elabscience.com

Fax: 1-832-243-6017

Recombinant Human SLAMF7/CD319 Protein (His Tag)



Catalog Number:PKSH031026

of a functional SAP. CS1 is a self ligand and homophilic interaction of CS1 regulates NK cell cytolytic activity. CRACC positively regulated natural killer cell functions by a mechanism dependent on the adaptor EAT-2 but not the related adaptor SAP. However, in the absence of EAT-2, CRACC potently inhibited natural killer cell function. It was also inhibitory in T cells, which are typically devoid of EAT-2. Thus, CRACC can exert activating or inhibitory influences on cells of the immune system depending on cellular context and the availability of effector proteins.

For Research Use Only

A Reliable Research Partner in Life Science and Medicine

Toll-free: 1-888-852-8623

Tel: 1-832-243-6086

Fax: 1-832-243-6017

Web: www.elabscience.com

Email: techsupport@elabscience.com