

# Recombinant Human S100A8 Protein (His Tag)

Catalog Number:PDEH100024



**Note:** Centrifuge before opening to ensure complete recovery of vial contents.

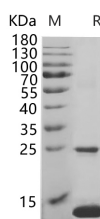
## Description

<b>Synonyms</b>	60B8Ag;AI323541;B8Ag;BEE11;CAGA;Calgranulin-A;Calprotectin L1L subunit;Calprotectin;CFAG;CGLA;Chemotactic cytokine CP-10;CP-10;Cystic fibrosis antigen;L1Ag;Leukocyte L1 complex light chain;MA387;MIF;Migration inhibitory factor-related protein 8;MRP-8;Myeloid-related protein 8;Neutrophil cytosolic 7 kDa protein;NIF;p8;Pro-inflammatory S100 cytokine;Protein S100-A8;S100 calcium binding protein A8 (calgranulin A);S100 calcium binding protein A8;S100 calcium-binding protein A8;S100A8;S100A8/S100A9 complex;S10A8;Urinary stone protein band A
<b>Species</b>	Human
<b>Expression Host</b>	E.coli
<b>Sequence</b>	Met1-Glu93
<b>Accession</b>	P05109-1
<b>Calculated Molecular Weight</b>	10.8 kDa
<b>Observed molecular weight</b>	13.1 kDa
<b>Tag</b>	N-His

## Properties

<b>Purity</b>	> 90 % as determined by reducing SDS-PAGE.
<b>Endotoxin</b>	Please contact us for more information.
<b>Storage</b>	Generally, lyophilized proteins are stable for up to 12 months when stored at -20 to -80°C. Reconstituted protein solution can be stored at 4-8°C for 2-7 days. Aliquots of reconstituted samples are stable at < -20°C for 3 months.
<b>Shipping</b>	This product is provided as lyophilized powder which is shipped with ice packs.
<b>Formulation</b>	Lyophilized from sterile PBS, pH 7.4. Normally 5 % - 8 % trehalose, mannitol and 0.01% Tween80 are added as protectants before lyophilization. Please refer to the specific buffer information in the printed manual.
<b>Reconstitution</b>	Please refer to the printed manual for detailed information.

## Data



> 90 % as determined by reducing SDS-PAGE.

## Background

The protein encoded by this gene is a member of the S100 family of proteins containing 2 EF-hand calcium-binding

## For Research Use Only

A Reliable Research Partner in Life Science and Medicine

Toll-free: 1-888-852-8623

Web: [www.elabscience.com](http://www.elabscience.com)

Tel: 1-832-243-6086

Email: [techsupport@elabscience.com](mailto:techsupport@elabscience.com)

Fax: 1-832-243-6017

# Recombinant Human S100A8 Protein (His Tag)

Catalog Number: PDEH100024



motifs. S100 proteins are localized in the cytoplasm and/or nucleus of a wide range of cells, and involved in the regulation of a number of cellular processes such as cell cycle progression and differentiation. S100 genes include at least 13 members which are located as a cluster on chromosome 1q21. This protein may function in the inhibition of casein kinase and as a cytokine. Altered expression of this protein is associated with the disease cystic fibrosis. Multiple transcript variants encoding different isoforms have been found for this gene.

---

## For Research Use Only

A Reliable Research Partner in Life Science and Medicine

Toll-free: 1-888-852-8623

Web: [www.elabscience.com](http://www.elabscience.com)

Tel: 1-832-243-6086

Email: [techsupport@elabscience.com](mailto:techsupport@elabscience.com)

Fax: 1-832-243-6017