

Recombinant Human TXNDC12/ERp18 Protein (His Tag)

Catalog Number: PKSH033106

Note: Centrifuge before opening to ensure complete recovery of vial contents.

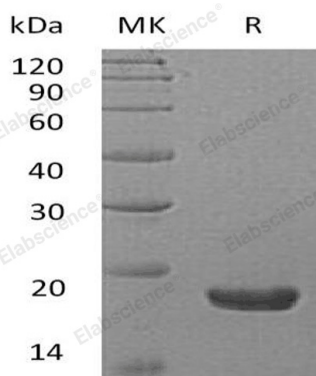
Description

Species	Human
Source	HEK293 Cells-derived Human TXNDC12;ERp18 protein His27-Leu168, with an C-terminal His
Calculated MW	17.0 kDa
Observed MW	18 kDa
Accession	O95881
Bio-activity	Not validated for activity

Properties

Purity	> 95 % as determined by reducing SDS-PAGE.
Concentration	Subject to label value.
Endotoxin	< 1.0 EU per µg of the protein as determined by the LAL method.
Storage	Store at < -20°C, stable for 6 months. Please minimize freeze-thaw cycles.
Shipping	This product is provided as liquid. It is shipped at frozen temperature with blue ice/gel packs. Upon receipt, store it immediately at < -20°C.
Formulation	Supplied as a 0.2 µm filtered solution of 20mM PB, 150mM NaCl, 10% Glycerol, pH 7.4.

Data



> 95 % as determined by reducing SDS-PAGE.

Background

Thioredoxin Domain-Containing Protein 12 belongs to the thioredoxin superfamily. In this family, proteins possess a thioredoxin fold with a consensus active-site sequence (CxxC) and have roles in redox regulation, defense against oxidative stress, refolding of disulfide-containing proteins, and regulation of transcription factors. TXNDC12 is widely expressed in many tissues and contains one thioredoxin domain.