

## LMNA Polyclonal Antibody

**catalog number: E-AB-70326**

**Note:** Centrifuge before opening to ensure complete recovery of vial contents.

### Description

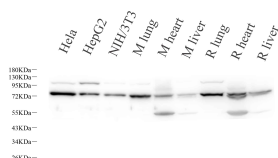
<b>Reactivity</b>	Human;Mouse;Rat
<b>Immunogen</b>	KLH conjugated Synthetic peptide corresponding to Mouse Lamin A/C
<b>Host</b>	Rabbit
<b>Isotype</b>	IgG
<b>Purification</b>	Affinity purification
<b>Buffer</b>	Phosphate buffered solution, pH 7.4, containing 0.05% stabilizer, 1% protein protectant and 50% glycerol.

### Applications

Applications	Recommended Dilution
<b>WB</b>	1:1000-1:2000
<b>IHC</b>	1:300-1:800

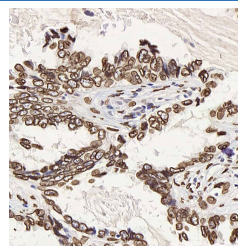
### Recommended Dilution

### Data

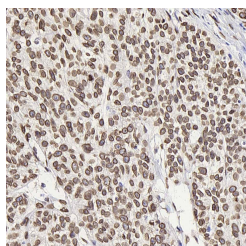


Western Blot analysis of various samples using LMNA Polyclonal Antibody at dilution of 1:1000.

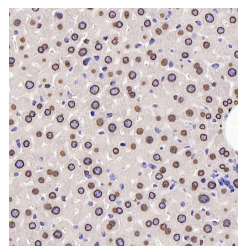
**Observed-MW:65 /74 kDa**  
**Calculated-MW:65/74 kDa**



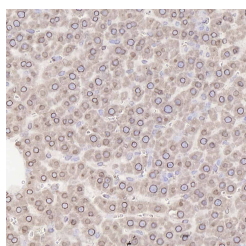
Immunohistochemistry analysis of paraffin-embedded human lung cancer using LMNA Polyclonal Antibody at dilution of 1:300.



Immunohistochemistry analysis of paraffin-embedded human esophageal cancer using LMNA Polyclonal Antibody at dilution of 1:300.



Immunohistochemistry analysis of paraffin-embedded mouse liver using LMNA Polyclonal Antibody at dilution of 1:300.



Immunohistochemistry analysis of paraffin-embedded rat liver using LMNA Polyclonal Antibody at dilution of 1:300.

### For Research Use Only

Toll-free: 1-888-852-8623  
Web: [www.elabscience.com](http://www.elabscience.com)

Tel: 1-832-243-6086  
Email: [techsupport@elabscience.com](mailto:techsupport@elabscience.com)

Fax: 1-832-243-6017

Rev. V1.7

## Preparation & Storage

**Storage**

Store at -20°C Valid for 12 months. Avoid freeze / thaw cycles.

**Shipping**

The product is shipped with ice pack, upon receipt, store it immediately at the temperature recommended.

## Background

The nuclear lamina consists of a two-dimensional matrix of proteins located next to the inner nuclear membrane. The lamin family of proteins make up the matrix and are highly conserved in evolution. During mitosis, the lamina matrix is reversibly disassembled as the lamin proteins are phosphorylated. Lamin proteins are thought to be involved in nuclear stability, chromatin structure and gene expression. Vertebrate lamins consist of two types, A and B. Alternative splicing results in multiple transcript variants.

## For Research Use Only