

Recombinant Human CLIC4 Protein (His Tag)

Catalog Number: PKSH033334



Note: Centrifuge before opening to ensure complete recovery of vial contents.

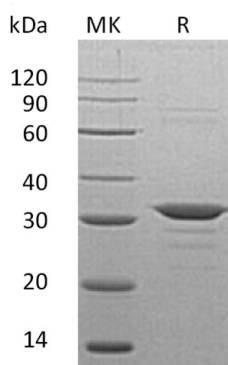
Description

Species	Human
Mol_Mass	30.9 kDa
Accession	Q9Y696
Bio-activity	Not validated for activity

Properties

Purity	> 95 % as determined by reducing SDS-PAGE.
Endotoxin	< 1.0 EU per µg of the protein as determined by the LAL method.
Storage	Store at < -20°C, stable for 6 months. Please minimize freeze-thaw cycles.
Shipping	This product is provided as liquid. It is shipped at frozen temperature with blue ice/gel packs. Upon receipt, store it immediately at < - 20°C.
Formulation	Supplied as a 0.2 µm filtered solution of 20mM Tris-HCl, 100mM NaCl, 1mM DTT, pH 8.0.
Reconstitution	Not Applicable

Data



> 95 % as determined by reducing SDS-PAGE.

Background

Chloride Intracellular Channel Protein 4 (CLIC4) is a 253 amino acid single-pass membrane protein that localizes to both the nucleus and the cytoplasm and contains one GST C-terminal domain. CLIC4 is expressed in various tissues and exhibits an intracellular vesicular pattern in Panc-1 cells (pancreatic cancer cells). CLIC4 acts as a monomer which is able to form selective ion channels in target proteins; thus facilitating the transport of chloride and other ions. CLIC4 is believed to have a role in apoptosis and is able to translocate to the nucleus under stress conditions. CLIC4 has alternate cellular functions like a potential role in angiogenesis or in maintaining apical-basolateral membrane polarity during mitosis and cytokinesis.

For Research Use Only

A Reliable Research Partner in Life Science and Medicine
Tel:400-999-2100

Email:techsupport@elabscience.cn

Web:www.elabscience.cn

Rev. V3.2