

C3AR1 Polyclonal Antibody

Catalog Number:E-AB-52181

Note: Centrifuge before opening to ensure complete recovery of vial contents.

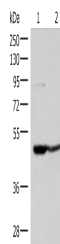
Description

Reactivity	Human
Immunogen	Fusion protein of human C3AR1
Host	Rabbit
Isotype	IgG
Purification	Antigen affinity purification
Conjugation	Unconjugated
Formulation	PBS with 0.05% NaN ₃ and 40% Glycerol,pH7.4

Applications Recommended Dilution

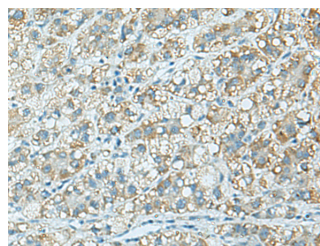
WB	1:500-1:2000
IHC	1:90-1:450
ELISA	1:5000-1:10000

Data



Western blot analysis of 293T and Jurkat cell lysates using C3AR1 Polyclonal Antibody at dilution of 1:400

Observed Mw:Refer to figures
Calculated Mw:54 kDa



Immunohistochemistry of paraffin-embedded Human liver cancer tissue using C3AR1 Polyclonal Antibody at dilution of 1:100(×200)

Preparation & Storage

Storage Store at -20°C. Avoid freeze / thaw cycles.

Background

The C3a receptor also known as complement component 3a receptor 1 (C3AR1) is a G protein-coupled receptorprotein involved in the complement system. Receptor for the chemotactic and inflammatory peptide anaphylatoxin C3a. This receptor stimulates chemotaxis, granule enzyme release and superoxide anion production. Widely expressed in several differentiated hematopoietic cell lines, in the lung, spleen, ovary, placenta, small intestine, throughout the brain, heart, and endothelial cells. Mostly expressed in lymphoid tissues.

For Research Use Only

A Reliable Research Partner in Life Science and Medicine

Toll-free: 1-888-852-8623

Web: www.elabscience.com

Tel: 1-832-243-6086

Email: techsupport@elabscience.com

Fax: 1-832-243-6017