

## CD19 Polyclonal Antibody

**catalog number: E-AB-70252**

**Note:** Centrifuge before opening to ensure complete recovery of vial contents.

### Description

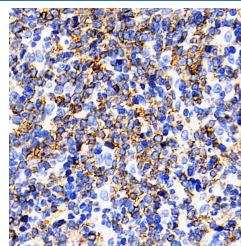
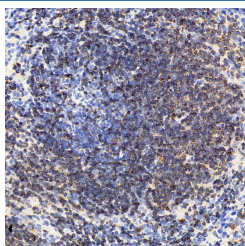
<b>Reactivity</b>	Human;Mouse;Rat
<b>Immunogen</b>	Recombinant protein corresponding to Mouse CD19
<b>Host</b>	Rabbit
<b>Isotype</b>	IgG
<b>Purification</b>	Affinity purification
<b>Buffer</b>	Phosphate buffered solution, pH 7.4, containing 0.05% stabilizer, 1% protein protectant and 50% glycerol.

### Applications

### Recommended Dilution

<b>IHC</b>	1:200-1:1000
------------	--------------

### Data



Immunohistochemistry analysis of paraffin-embedded mouse spleen using CD19 Polyclonal Antibody at dilution of 1:200. Immunohistochemistry analysis of paraffin-embedded Rat spleen using CD19 Polyclonal Antibody at dilution of 1:200.

### Preparation & Storage

<b>Storage</b>	Store at -20°C Valid for 12 months. Avoid freeze / thaw cycles.
<b>Shipping</b>	The product is shipped with ice pack, upon receipt, store it immediately at the temperature recommended.

### Background

CD19 is a B cell-specific molecule that controls B cell activation by complexing with the BCR. CD19 is a member of the Ig superfamily and is the dominant component for the signaling complex on B cells that includes CD21, CD81, and CD22. Humans with CD19 deficiency have reduced proliferative responses to BCR stimulation in vitro and mount impaired Ab responses to vaccination.

### For Research Use Only