

## CHCHD3 Polyclonal Antibody

**catalog number: E-AB-18614**

**Note:** Centrifuge before opening to ensure complete recovery of vial contents.

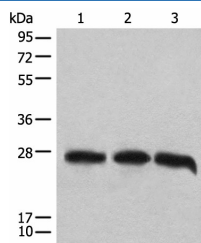
### Description

<b>Reactivity</b>	Human;Mouse
<b>Immunogen</b>	Full length fusion protein
<b>Host</b>	Rabbit
<b>Isotype</b>	IgG
<b>Purification</b>	Antigen affinity purification
<b>Buffer</b>	Phosphate buffered solution, pH 7.4, containing 0.05% stabilizer and 50% glycerol.

### Applications

Applications	Recommended Dilution
<b>WB</b>	1:1000-1:5000
<b>IHC</b>	1:30-1:150

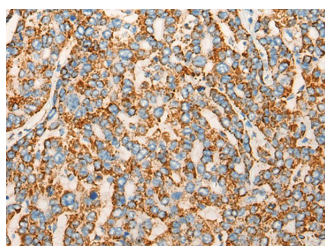
### Data



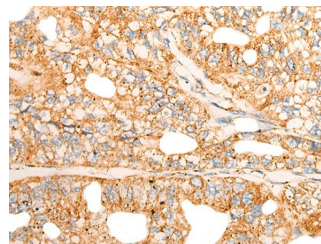
Western blot analysis of 293T cell lysates using CHCHD3 Polyclonal Antibody at dilution of 1:1000

**Observed-MW:Refer to figures**

**Calculated-MW:26 kDa**



Immunohistochemistry of paraffin-embedded Human liver cancer tissue using CHCHD3 Polyclonal Antibody at dilution of 1:45(×200)



Immunohistochemistry of paraffin-embedded Human gastric cancer tissue using CHCHD3 Polyclonal Antibody at dilution of 1:45(×200)

### Preparation & Storage

<b>Storage</b>	Store at -20°C Valid for 12 months. Avoid freeze / thaw cycles.
<b>Shipping</b>	The product is shipped with ice pack,upon receipt,store it immediately at the temperature recommended.

### Background

### For Research Use Only

The protein encoded by this gene is an inner mitochondrial membrane scaffold protein. Absence of the encoded protein affects the structural integrity of mitochondrial cristae and leads to reductions in ATP production, cell growth, and oxygen consumption. This protein is part of the mitochondrial contact site and cristae organizing system (MICOS). Several transcript variants encoding different isoforms have been found for this gene.

## For Research Use Only

Toll-free: 1-888-852-8623  
Web: [www.elabscience.com](http://www.elabscience.com)

Tel: 1-832-243-6086  
Email: [techsupport@elabscience.com](mailto:techsupport@elabscience.com)

Fax: 1-832-243-6017

Rev. V1.7