

## SYK Polyclonal Antibody

catalog number: **E-AB-68344**

**Note:** Centrifuge before opening to ensure complete recovery of vial contents.

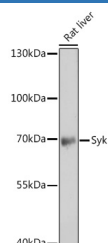
### Description

<b>Reactivity</b>	Human;Mouse;Rat
<b>Immunogen</b>	Recombinant protein of human SYK
<b>Host</b>	Rabbit
<b>Isotype</b>	IgG
<b>Purification</b>	Affinity purification
<b>Buffer</b>	Phosphate buffered solution, pH 7.4, containing 0.05% stabilizer and 50% glycerol.

### Applications Recommended Dilution

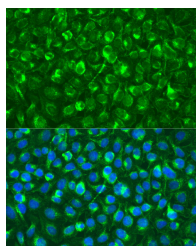
<b>WB</b>	1:500-1:2000
<b>IF</b>	1:50-1:200

### Data

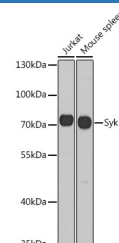


Western blot analysis of extracts of Rat liver using Syk Polyclonal Antibody at 1:500 dilution.

**Observed-MV:69 kDa/72 kDa**  
**Calculated-MV:69 kDa/72 kDa**



Immunofluorescence analysis of U2OS using Syk Polyclonal antibody at dilution of 1:100 (40x lens). Blue: DAPI for nuclear staining.



Western blot analysis of extracts of various cell lines using Syk Polyclonal Antibody at 1:1000 dilution.

**Observed-MV:69 kDa/72 kDa**  
**Calculated-MV:69 kDa/72 kDa**

### Preparation & Storage

<b>Storage</b>	Store at -20°C Valid for 12 months. Avoid freeze / thaw cycles.
<b>Shipping</b>	The product is shipped with ice pack, upon receipt, store it immediately at the temperature recommended.

### Background

### For Research Use Only

This gene encodes a member of the family of non-receptor type Tyr protein kinases. This protein is widely expressed in hematopoietic cells and is involved in coupling activated immunoreceptors to downstream signaling events that mediate diverse cellular responses, including proliferation, differentiation, and phagocytosis. It is thought to be a modulator of epithelial cell growth and a potential tumour suppressor in human breast carcinomas. Alternatively spliced transcript variants encoding different isoforms have been found for this gene.

## For Research Use Only

Toll-free: 1-888-852-8623  
Web: [www.elabscience.com](http://www.elabscience.com)

Tel: 1-832-243-6086  
Email: [techsupport@elabscience.com](mailto:techsupport@elabscience.com)

Fax: 1-832-243-6017

Rev. V1.6