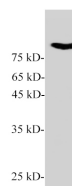


Gelsolin Polyclonal Antibody

catalog number: E-AB-40539

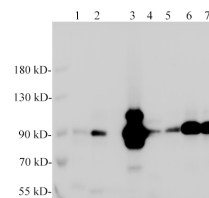
Note: Centrifuge before opening to ensure complete recovery of vial contents.

Description	
Reactivity	Human;Mouse;Rat;Zebrafish
Immunogen	Recombinant human Gelsolin protein expressed by E.coli
Host	Rabbit
Isotype	IgG
Purification	Antigen Affinity Purification
Conjugation	Unconjugated
Buffer	PBS with 0.05% Proclin300, 1% protective protein and 50% glycerol, pH7.4
Applications	Recommended Dilution
WB	1:1000-2000
Data	



Western blot of Zebrafish whole lysates with anti-Gelsolin rabbit polyclonal antibody at dilution of 1:1000.

Observed-MW:80 kDa
Calculated-MW:80 kDa



Western blotting of anti-Gelsolin polyclonal antibody at dilution of 1:1000. Lane1: HeLa, Lane2: A549, Lane3: MCF7, Lane4:PC-12, Lane5: Mouse spleen, Lane6: Rat lung, Lane7: Mouse lung

Observed-MW:80 kDa
Calculated-MW:80 kDa

Preparation & Storage	
Storage	Store at -20°C Valid for 12 months. Avoid freeze / thaw cycles.
Shipping	The product is shipped with ice pack,upon receipt,store it immediately at the temperature recommended.

Background	
Gelsolin (GSN) is an actin binding protein that regulates actin-severing/depolymerizing in a calcium dependent manner, and acts as a multifunctional regulator for cell metabolism and survival. Gelsolin exists in two isoforms: a cytoplasmic gelsolin (cGSN);	