

Recombinant GPX1 Monoclonal Antibody

catalog number: **AN301163L**

Note: Centrifuge before opening to ensure complete recovery of vial contents.

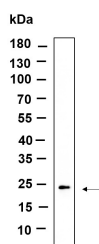
Description

Reactivity	Human;Mouse;Rat
Immunogen	Recombinant Human GPX1 protein
Host	Rabbit
Isotype	IgG, κ
Clone	B922
Purification	Protein A
Buffer	PBS, 50% glycerol, 0.05% Proclin 300, 0.05% protein protectant.

Applications

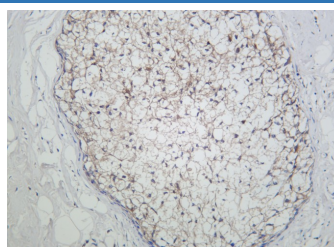
Applications	Recommended Dilution
IHC	1:200-1:1000
WB	1:2000-1:10000

Data



Western Blot with Recombinant GPX1 Monoclonal Antibody at dilution of 1:1000 dilution. Lane A: Rat liver lysate.

Observed-MW:22 kDa
Calculated-MW:22 kDa



Immunohistochemistry of paraffin-embedded human breast carcinoma using Recombinant GPX1 Monoclonal Antibody at dilution of 1:200.

Preparation & Storage

Storage	Store at -20°C Valid for 12 months. Avoid freeze / thaw cycles.
Shipping	Ice bag

Background

The protein encoded by this gene belongs to the glutathione peroxidase family, members of which catalyze the reduction of organic hydroperoxides and hydrogen peroxide (H₂O₂) by glutathione, and thereby protect cells against oxidative damage. Other studies indicate that H₂O₂ is also essential for growth-factor mediated signal transduction, mitochondrial function, and maintenance of thiol redox-balance; therefore, by limiting H₂O₂ accumulation, glutathione peroxidases are also involved in modulating these processes. Several isozymes of this gene family exist in vertebrates, which vary in cellular location and substrate specificity. This isozyme is the most abundant, is ubiquitously expressed and localized in the cytoplasm, and whose preferred substrate is hydrogen peroxide. It is also a selenoprotein, containing the rare amino acid selenocysteine (Sec) at its active site.

For Research Use Only