

# Recombinant Human LAMTOR3/MP1 Protein (His Tag)

Catalog Number:PKSH032742



**Note:** Centrifuge before opening to ensure complete recovery of vial contents.

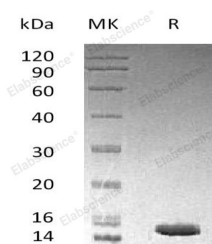
## Description

<b>Synonyms</b>	Ragulator Complex Protein LAMTOR3;Late Endosomal/Lysosomal Adaptor and MAPK and MTOR Activator 3;MEK-Binding Partner 1;Mp1;Mitogen-Activated Protein Kinase Kinase 1-Interacting Protein 1;Mitogen-Activated Protein Kinase Scaffold Protein 1;LAMTOR3;MAP2K1IP1;MAPKSP1
<b>Species</b>	Human
<b>Expression Host</b>	E.coli
<b>Sequence</b>	Met 1-Val124
<b>Accession</b>	Q9UHA4
<b>Calculated Molecular Weight</b>	15.8 kDa
<b>Observed molecular weight</b>	15 kDa
<b>Tag</b>	N-His

## Properties

<b>Purity</b>	> 95 % as determined by reducing SDS-PAGE.
<b>Endotoxin</b>	< 1.0 EU per µg of the protein as determined by the LAL method.
<b>Storage</b>	Store at < -20°C, stable for 6 months. Please minimize freeze-thaw cycles.
<b>Shipping</b>	This product is provided as liquid. It is shipped at frozen temperature with blue ice/gel packs. Upon receipt, store it immediately at < - 20°C.
<b>Formulation</b>	Supplied as a 0.2 µm filtered solution of 20mM Tris-HCl, 100mM NaCl, 5mM DTT, 30% Glycerol, pH 8.0.
<b>Reconstitution</b>	Not Applicable

## Data



> 95 % as determined by reducing SDS-PAGE.

## Background

Mitogen-Activated Protein Kinase Scaffold Protein 1 (MAPKSP1) was identified as an interacting protein that belongs to the LAMTOR3 family. MAPKSP1 restricted to late endosomes by the mitogen-activated protein-binding protein-interacting protein, and binds specifically to MAP kinase kinase MAP2K1/MEK1, MAP kinase MAPK3/ERK1, and MAP kinase MAPK1/ERK2. MAPKSP1 interacts with MAP2K1/MEK1 and MAPK2 and enhances the activation of MAPK2, and thus is thought to function as an adaptor to enhance the efficiency of the MAP kinase cascade.

## For Research Use Only

A Reliable Research Partner in Life Science and Medicine

Toll-free: 1-888-852-8623

Web: [www.elabscience.com](http://www.elabscience.com)

Tel: 1-832-243-6086

Email: [techsupport@elabscience.com](mailto:techsupport@elabscience.com)

Fax: 1-832-243-6017