

## PerCP/Cyanine5.5 Anti-Human CD197/CCR7 Antibody[G043H7]

Catalog Number: E-AB-F1159J

**Note:** Centrifuge before opening to ensure complete recovery of vial contents.

### Description

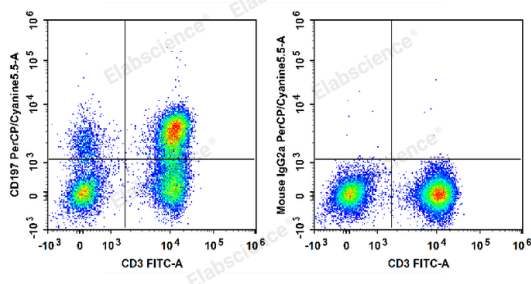
Reactivity	Human
Host	Mouse
Isotype	Mouse IgG2a, κ
Clone No.	G043H7
Isotype Control	PerCP/Cyanine5.5 Mouse IgG2a, κ Isotype Control[C1.18.4] [Product E-AB-F09802J]
Conjugation	PerCP/Cyanine 5.5
Conjugation Information	PerCP/Cyanine5.5 is designed to be excited by the blue laser (488 nm) and detected using an optical filter centered near 675 nm (e.g., a 690/50 nm bandpass filter).
Storage Buffer	Phosphate buffered solution, pH 7.2, containing 0.09% stabilizer and 1% protein protectant.

### Applications

### Recommended usage

FCM	Each lot of this antibody is quality control tested by flow cytometric analysis. <b>The amount of the reagent is suggested to be used 5 μL of antibody per test (million cells in 100 μL staining volume or per 100 μL of whole blood).</b> Please check your vial before the experiment. Since applications vary, the appropriate dilutions must be determined for individual use.
-----	---

### Data



Human peripheral blood lymphocytes are stained with FITC Anti-Human CD3 Antibody and PerCP/Cyanine5.5 Anti-Human CD197/CCR7 Antibody (Left). Lymphocytes are stained with FITC Anti-Human CD3 Antibody and PerCP/Cy5.5 Mouse IgG2a, κ Isotype Control (Right).

### Preparation & Storage

Storage	Keep as concentrated solution. This product can be stored at 2-8°C for 12 months. Please protected from prolonged exposure to light and do not freeze.
Shipping	Ice bag

### Antigen Information

Alternate Names	EBI1EV1;CCR-7;CDw197;CMKBR7
Uniprot ID	P32248

### For Research Use Only

**Gene ID**

1236

**Background**

CCR7, also known as CD197, is a chemokine receptor that binds CCL19 and CCL21. CCR7 and its ligands link innate and adaptive immunity by affecting interactions between T cells and dendritic cells and their downstream effect. Naïve T cells enter the lymph node through high endothelial venules, which express CCL21. Dendritic cells and macrophages enter the lymph node through afferent lymphatics. The encounter of T cells and dendritic cells in the T cell zone is CCR7-dependent. In addition, during immunological surveillance, B cells recirculate between B-cell-rich compartments (follicles or B cell zones) in secondary lymphoid organs, surveying for antigen. After antigen binding, B cells move to the boundary of B and T zones to interact with T-helper cells; this B cell migration is directed by CCR7 and its ligands. CCR7-positive cancer cell expression has been associated with lymph node metastasis.

**For Research Use Only**