

CAPN15 Polyclonal Antibody

catalog number: E-AB-19658

Note: Centrifuge before opening to ensure complete recovery of vial contents.

Description

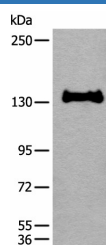
Reactivity	Human;Mouse
Immunogen	Synthetic peptide of human CAPN15
Host	Rabbit
Isotype	IgG
Purification	Antigen affinity purification
Conjugation	Unconjugated
buffer	Phosphate buffered solution, pH 7.4, containing 0.05% stabilizer and 50% glycerol.

Applications

Recommended Dilution

WB	1:500-1:2000
IHC	1:40-1:200

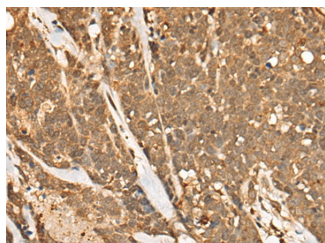
Data



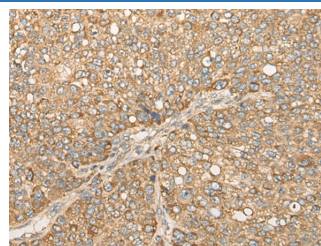
Western blot analysis of 231 cell lysate using CAPN15 Polyclonal Antibody at dilution of 1:450

Observed-MV:Refer to figures

Calculated-MV:117 kDa



Immunohistochemistry of paraffin-embedded Human thyroid cancer tissue using CAPN15 Polyclonal Antibody at dilution of 1:50($\times 200$)



Immunohistochemistry of paraffin-embedded Human liver cancer tissue using CAPN15 Polyclonal Antibody at dilution of 1:50($\times 200$)

Preparation & Storage

Storage	Store at -20°C Valid for 12 months. Avoid freeze / thaw cycles.
Shipping	The product is shipped with ice pack,upon receipt,store it immediately at the temperature recommended.

Background

This gene encodes a protein containing zinc-finger-like repeats and a calpain-like protease domain. The encoded protein may function as a transcription factor, RNA-binding protein, or in protein-protein interactions during visual system development.

For Research Use Only