

Recombinant Human CD200 protein (His tag)

Catalog Number:PDMH100146



Note: Centrifuge before opening to ensure complete recovery of vial contents.

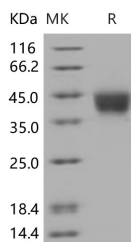
Description

Synonyms	OX-2 Membrane Glycoprotein;CD200;MOX1;MOX2
Species	Human
Expression Host	HEK293 Cells
Sequence	Met1-Gly232
Accession	P41217
Calculated Molecular Weight	25.4 kDa
Observed molecular weight	35 kDa
Tag	C-His

Properties

Purity	> 95 % as determined by reducing SDS-PAGE.
Endotoxin	Please contact us for more information.
Storage	Generally, lyophilized proteins are stable for up to 12 months when stored at -20 to -80°C. Reconstituted protein solution can be stored at 4-8°C for 2-7 days. Aliquots of reconstituted samples are stable at < -20°C for 3 months.
Shipping	This product is provided as lyophilized powder which is shipped with ice packs.
Formulation	Lyophilized from sterile PBS, pH 7.4. Normally 5 % - 8 % trehalose, mannitol and 0.01 % Tween80 are added as protectants before lyophilization. Please refer to the specific buffer information in the printed manual.
Reconstitution	Please refer to the printed manual for detailed information.

Data



> 95 % as determined by reducing SDS-PAGE.

Background

CD200 is a transmembrane immunoregulatory protein that belongs to the immunoglobulin superfamily. It contains one Ig like V type domain and one Ig like C2 type domain in its extracellular domain. CD200 is widely but not ubiquitously expressed. Its receptor (CD200R) is restricted primarily to mast cells; basophils; macrophages; and dendritic cells; which suggests myeloid cell regulation as the major function of CD200. CD200 and CD200R associate via their respective N-terminal Ig-like domains. In myeloid cells; CD200R initiates inhibitory signals following receptor-ligand contact. In T cells; CD200 functions as a co-stimulatory molecule independent of the CD28 pathway. In addition; CD200 also plays an important role in prevention of graft rejection; autoimmune diseases and spontaneous abortion.

For Research Use Only

A Reliable Research Partner in Life Science and Medicine

Toll-free: 1-888-852-8623

Web: www.elabscience.com

Tel: 1-832-243-6086

Email: techsupport@elabscience.com

Fax: 1-832-243-6017