

## Recombinant CREB Regulated Transcription Coactivator 2 Monoclonal Antibody

catalog number: **E-AB-81549**

**Note:** Centrifuge before opening to ensure complete recovery of vial contents.

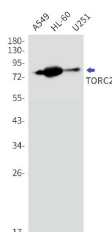
### Description

<b>Reactivity</b>	Human
<b>Immunogen</b>	A synthetic peptide of human TORC2
<b>Host</b>	Rabbit
<b>Isotype</b>	IgG
<b>Clone</b>	R08-5F2
<b>Purification</b>	Affinity Purified
<b>Buffer</b>	50mM Tris-Glycine(pH 7.4), 0.15M NaCl, 40% Glycerol, 0.05% stabilizer and 0.05% protective protein.

### Applications

Applications	Recommended Dilution
<b>WB</b>	1:500-1:1000
<b>IHC</b>	1:50-1:100

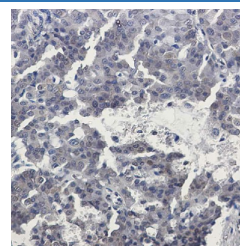
### Data



Western blot detection of TORC2 in A549,HL-60,U251 cell lysates using TORC2 Rabbit mAb(1:1000 diluted).Predicted band size:73kDa.Observed band size:80kDa.

**Observed-MW:80 kDa**

**Calculated-MW:73 kDa**



Immunohistochemistry of TORC2 in paraffin-embedded Human breast cancer tissue using TORC2 Rabbit mAb at dilution 1:50

### Preparation & Storage

<b>Storage</b>	Store at -20°C Valid for 12 months. Avoid freeze / thaw cycles.
<b>Shipping</b>	The product is shipped with ice pack,upon receipt,store it immediately at the temperature recommended.

### Background

This gene encodes a member of the transducers of regulated cAMP response element-binding protein activity family of transcription coactivators. These proteins promote the transcription of genes targeted by the cAMP response element-binding protein, and therefore play an important role in many cellular processes. Under basal conditions the encoded protein is phosphorylated by AMP-activated protein kinase or the salt-inducible kinases and is sequestered in the cytoplasm.

### For Research Use Only