

(KO Validated) CBX3 Polyclonal Antibody

catalog number: **E-AB-62382**

Note: Centrifuge before opening to ensure complete recovery of vial contents.

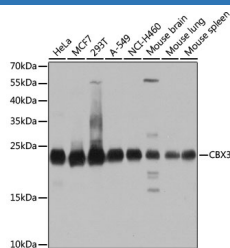
Description

Reactivity	Human;Mouse;Rat
Immunogen	Recombinant fusion protein of human CBX3 (NP_009207.2).
Host	Rabbit
Isotype	IgG
Purification	Affinity purification
Buffer	Phosphate buffered solution, pH 7.4, containing 0.05% stabilizer and 50% glycerol.

Applications

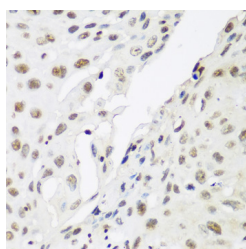
Applications	Recommended Dilution
WB	1:500-1:2000
IHC	1:50-1:200
IF	1:50-1:200

Data

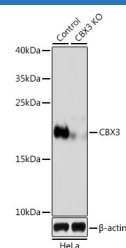
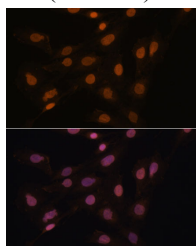


Western blot analysis of extracts of various cell lines using CBX3 Polyclonal Antibody at dilution of 1:1000.

Observed-MW:23 kDa
Calculated-MW:20 kDa

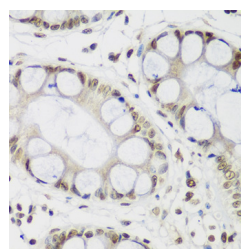


Immunohistochemistry of paraffin-embedded Human lung cancer using CBX3 Polyclonal Antibody at dilution of 1:200 (40x lens).

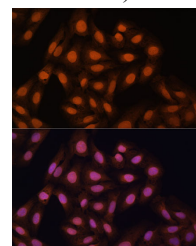


Western blot analysis of extracts from normal (control) and CBX3 knockout (KO) HeLa cells using CBX3 Polyclonal Antibody at dilution of 1:500.

Observed-MW:23 kDa
Calculated-MW:20 kDa



Immunohistochemistry of paraffin-embedded Human gastric tissue using CBX3 Polyclonal Antibody at dilution of 1:200 (40x lens).



For Research Use Only

Toll-free: 1-888-852-8623
Web: www.elabscience.com

Tel: 1-832-243-6086
Email: techsupport@elabscience.com

Fax: 1-832-243-6017

Rev. V1.7

Immunofluorescence analysis of C6 cells using CBX3 Polyclonal Antibody at dilution of 1:100. Blue: DAPI for nuclear staining.

Immunofluorescence analysis of U-2 OS cells using CBX3 Polyclonal Antibody at dilution of 1:100. Blue: DAPI for nuclear staining.

Preparation & Storage

Storage

Store at -20°C Valid for 12 months. Avoid freeze / thaw cycles.

Shipping

The product is shipped with ice pack, upon receipt, store it immediately at the temperature recommended.

Background

At the nuclear envelope, the nuclear lamina and heterochromatin are adjacent to the inner nuclear membrane. The protein encoded by this gene binds DNA and is a component of heterochromatin. This protein also can bind lamin B receptor, an integral membrane protein found in the inner nuclear membrane. The dual binding functions of the encoded protein may explain the association of heterochromatin with the inner nuclear membrane. This protein binds histone H3 tails methylated at Lys-9 sites. This protein is also recruited to sites of ultraviolet-induced DNA damage and double-strand breaks. Two transcript variants encoding the same protein but differing in the 5' UTR, have been found for this gene.

For Research Use Only