

# GOSR1 Polyclonal Antibody

Catalog Number: E-AB-67612

**Note:** Centrifuge before opening to ensure complete recovery of vial contents.

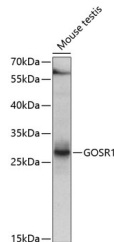
## Description

|                     |  |
|---------------------|--|
| <b>Reactivity</b>   | Human, Mouse                                       |
| <b>Immunogen</b>    | Recombinant fusion protein of human GOSR1          |
| <b>Host</b>         | Rabbit   |
| <b>Isotype</b>      | IgG  |
| <b>Purification</b> | Affinity purification                              |
| <b>Conjugation</b>  | Unconjugated                                       |
| <b>Formulation</b>  | PBS with 0.02% sodium azide, 50% glycerol, pH 7.3. |

## Applications Recommended Dilution

|           |              |
|-----------|--------------|
| <b>WB</b> | 1:500-1:2000 |
|-----------|--------------|

## Data



Western blot analysis of extracts of mouse testis using GOSR1 Polyclonal Antibody at 1:1000 dilution.

**Observed MW: 29kDa**  
**Calculated Mw: 21kDa/28kDa**

## Preparation & Storage

**Storage** Store at -20°C. Avoid freeze / thaw cycles.

## Background

This gene encodes a trafficking membrane protein which transports proteins among the endoplasmic reticulum and the Golgi and between Golgi compartments. This protein is considered an essential component of the Golgi SNAP receptor (SNARE) complex. Alternatively spliced transcript variants encoding distinct isoforms have been found for this gene.

## For Research Use Only

A Reliable Research Partner in Life Science and Medicine

Toll-free: 1-888-852-8623

Web: [www.elabscience.com](http://www.elabscience.com)

Tel: 1-832-243-6086

Email: [techsupport@elabscience.com](mailto:techsupport@elabscience.com)

Fax: 1-832-243-6017