

Recombinant Human Complement Factor H/CFH Protein (His Tag)

Catalog Number: PKSH032273

Note: Centrifuge before opening to ensure complete recovery of vial contents.

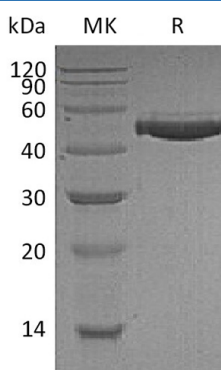
Description

Species	Human
Source	HEK293 Cells-derived Human Complement Factor H;CFH protein Glu19-Leu449, with an C-terminal His
Calculated MW	50.0 kDa
Observed MW	50 kDa
Accession	P08603-2
Bio-activity	Not validated for activity

Properties

Purity	> 95 % as determined by reducing SDS-PAGE.
Concentration	Subject to label value.
Endotoxin	< 1.0 EU per µg of the protein as determined by the LAL method.
Storage	Store at < -20°C, stable for 6 months. Please minimize freeze-thaw cycles.
Shipping	This product is provided as liquid. It is shipped at frozen temperature with blue ice/gel packs. Upon receipt, store it immediately at < - 20°C.
Formulation	Supplied as a 0.2 µm filtered solution of PBS,20%Glycerol,5% Trehalose,pH7.4.

Data



> 95 % as determined by reducing SDS-PAGE.

Background

Complement Factor H (CFH) is a secreted protein which is a member of the regulators of complement activation family and is a complement control protein. It is expressed by the liver and secreted in plasma. Its principal function is to regulate the Alternative Pathway of the complement system, ensuring that the complement system is directed towards pathogens or other dangerous material and does not damage host tissue. Factor H regulates complement activation on self cells and surfaces by possessing both cofactor activity for the Factor I mediated C3b cleavage, and decay accelerating activity against the alternative pathway C3-convertase, C3bBb. Factor H exerts its protective action on self cells and self surfaces but not on the surfaces of bacteria or viruses, because it binds to glycosaminoglycans (GAGs) that are generally present on host cells but not, normally, on pathogen surfaces.

For Research Use Only

Toll-free: 1-888-852-8623
Web: www.elabscience.com

Tel: 1-832-243-6086
Email: techsupport@elabscience.com

Fax: 1-832-243-6017