

Recombinant Mouse YM1/ECF-L/Chil3 Protein (His Tag)

Catalog Number: PKSM040334

Note: Centrifuge before opening to ensure complete recovery of vial contents.

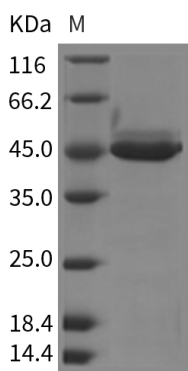
Description

Species	Mouse
Source	HEK293 Cells-derived Mouse YM1/ECF-L/Chil3 protein Met1-Tyr398, with an C-terminal His
Calculated MW	43.8 kDa
Accession	NP_034022.2
Bio-activity	Not validated for activity

Properties

Purity	> 95 % as determined by reducing SDS-PAGE.
Endotoxin	< 1.0 EU per µg of the protein as determined by the LAL method.
Storage	Generally, lyophilized proteins are stable for up to 12 months when stored at -20 to -80°C. Reconstituted protein solution can be stored at 4-8°C for 2-7 days. Aliquots of reconstituted samples are stable at < -20°C for 3 months.
Shipping	This product is provided as lyophilized powder which is shipped with ice packs.
Formulation	Lyophilized from sterile PBS, pH 7.4 Normally 5% - 8% trehalose, mannitol and 0.01% Tween 80 are added as protectants before lyophilization. Please refer to the specific buffer information in the printed manual.
Reconstitution	Please refer to the printed manual for detailed information.

Data



> 95 % as determined by reducing SDS-PAGE.

Background

Chitinase 3-like 3 gene, also known as YM1 and ECF-L, encodes a precursor protein with 398 amino acid residues with a 21 residue signal sequence. Chitinase 3-like 3 protein is a lectin that binds saccharides with a free amino group, such as glucosamine or galactosamine. Binding to oligomeric saccharides is much stronger than binding to mono- or disaccharides. Also binds heparin and G1cN oligomers, and is produced primarily by macrophages during inflammation. It has chemotactic activity for T-lymphocytes, bone marrow cells and eosinophils.

For Research Use Only

Toll-free: 1-888-852-8623
Web: www.elabscience.com

Tel: 1-832-243-6086
Email: techsupport@elabscience.com

Fax: 1-832-243-6017