

## Placental alkaline phosphatase (PLAP) Polyclonal Antibody

catalog number: **E-AB-92361**

**Note:** Centrifuge before opening to ensure complete recovery of vial contents.

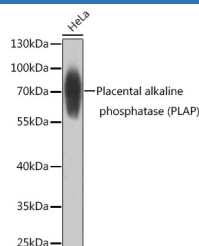
### Description

<b>Reactivity</b>	Human
<b>Immunogen</b>	Recombinant fusion protein of human Placental alkaline phosphatase
<b>Host</b>	Rabbit
<b>Isotype</b>	IgG
<b>Purification</b>	Affinity purification
<b>Buffer</b>	Phosphate buffered solution, pH 7.4, containing 0.05% stabilizer and 50% glycerol.

### Applications

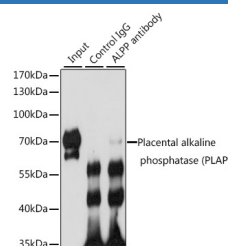
<b>WB</b>	1:500-1:2000
<b>IP</b>	50-1:200

### Data



Western blot analysis of extracts of HeLa cells using Placental alkaline phosphatase Polyclonal Antibody at 1:1000 dilution.

**Observed-MW: Refer to figures**  
**Calculated-MW: 57 kDa**



Immunoprecipitation analysis of 200ug extracts of HeLa cells using 3 ug Placental alkaline phosphatase (PLAP) Polyclonal Antibody. Western blot was performed from the immunoprecipitate using Placental alkaline phosphatase (PLAP) Polyclonal Antibody at a dilution of 1:1000.

**Observed-MW: Refer to figures**  
**Calculated-MW: 57 kDa**

### Preparation & Storage

<b>Storage</b>	Store at -20°C Valid for 12 months. Avoid freeze / thaw cycles.
<b>Shipping</b>	The product is shipped with ice pack, upon receipt, store it immediately at the temperature recommended.

### Background

The protein encoded by this gene is an alkaline phosphatase, a metalloenzyme that catalyzes the hydrolysis of phosphoric acid monoesters. It belongs to a multigene family composed of four alkaline phosphatase isoenzymes. The enzyme functions as a homodimer and has a catalytic site containing one magnesium and two zinc ions, which are required for its enzymatic function. The protein is primarily expressed in placental and endometrial tissue; however, strong ectopic expression has been detected in ovarian adenocarcinoma, serous cystadenocarcinoma, and other ovarian cancer cells.

### For Research Use Only