

ZFP36L2 Polyclonal Antibody

catalog number: **E-AB-13735**

Note: Centrifuge before opening to ensure complete recovery of vial contents.

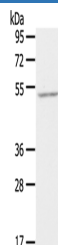
Description

Reactivity	Human;Mouse
Immunogen	Synthetic peptide of human ZFP36L2
Host	Rabbit
Isotype	IgG
Purification	Affinity purification
Buffer	Phosphate buffered solution, pH 7.4, containing 0.05% stabilizer and 50% glycerol.

Applications

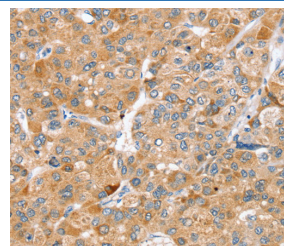
Applications	Recommended Dilution
WB	1:200-1:1000
IHC	1:25-1:100

Data



Western Blot analysis of NIH/3T3 cell using ZFP36L2 Polyclonal Antibody at dilution of 1:550

Calculated-MV:51 kDa



Immunohistochemistry of paraffin-embedded Human liver cancer using ZFP36L2 Polyclonal Antibody at dilution of 1:45

Preparation & Storage

Storage	Store at -20°C Valid for 12 months. Avoid freeze / thaw cycles.
Shipping	The product is shipped with ice pack, upon receipt, store it immediately at the temperature recommended.

Background

This gene is a member of the TIS11 family of early response genes. Family members are induced by various agonists such as the phorbol ester TPA and the polypeptide mitogen EGF. The encoded protein contains a distinguishing putative zinc finger domain with a repeating cys-his motif. This putative nuclear transcription factor most likely functions in regulating the response to growth factors.

For Research Use Only